



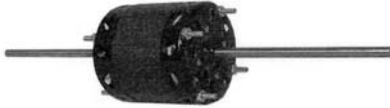
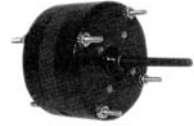
---

# MANUFACTURERS INDEX, SECTION 9

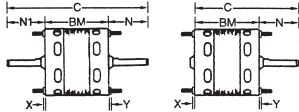
A.O. SMITH MOTORS . . . . . 9-1 – 9-7

## 3.3 Shaded Pole Motors Enclosed

HP	RPM/Speeds	Volts	Amps	Stock Number	Rotation	Dim. BM	Shaft Length and Dia.	Wgt.
1/50	1550	115	0.8	A0124	CCWLE	2.25	2.25 x .25	3
1/50	1550	115	0.8	A0125	CWLE	2.25	2.25 x .25	3



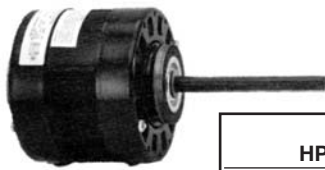
## WINDOW AIR CONDITIONER Open



HP	RPM/Speeds	Volts	Amps	Stock Number	Rotation	Dim. BM	Shaft Length and Dia.	Wgt.
1/14, 1/25	1550/2spd	115	2.5, 1.5	A0366	CCWLE	3.2	6.38 x .31 x 6.38	6
1/12, 1/20, 1/30	1550/3spd	115	2.8-2.0-1.6	A0367	CCWLE	3.6	5.75 x .31 x 5.75	6

## Single Shaft Open Fan/Blower Motors

Furnaces - Air Handlers - Fan Coils



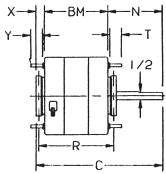
Type B

- Auto Protector
- Continuous Air Over
- 1/2" Dia. - Flatted Shaft\*\*
- 40°C Ambient
- Multiple Mount
- Open Construction
- Sleeve Bearing
- 42 Frame (5.0" Dia.)
- 60 HZ only

HP	RPM/Speeds	Volts	Amps	Stock Number	Rotation	Motor Type	Ring* Type	Dim. Ref.	Conn. Dia.	Notes	Wgt.
1/5-1/8-1/10	1050/3	115	6.5	BL6414	CCWLE	B	B	7	1	6	11

Notes:  
6. 3 thru bolts, 4.42 dia. bolt circle

### Approximate Dimensions



Ref.	BM	R	C	N	T	X	Y
5	3-7/8	4-9/16	8	3-11/16	--	1/2	
7	3-7/8	4-9/16	9-15/16	5-1/2	1/2	1/2	

## Totally Enclosed Fan/Blower Motors

Unit Heaters



Type C

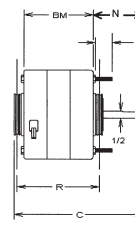
- Auto Protector
- Continuous Air Over
- Mounted Capacitor (PSC)
- Multiple Mount
- Sleeve and Ball Bearing
- 40°C Ambient
- 42 & 48 Frame
- 60 HZ only

HP	RPM	Volts	Amps	Frame	Stock Number	Bearings	Rotation	Motor Type	Ring* Type	Dim. Ref.	Conn. Dia.	Notes	Wgt.
<b>SHADED POLE</b>													
1/15	1050	115	3.1	42Y	U6430	Sleeve	CCWLE	A	B	1	--	5,6	8

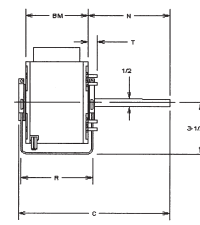
HP	RPM	Volts	Amps	Frame	Stock Number	Bearings	Rotation	Motor Type	Ring* Type	Dim. Ref.	Conn. Dia.	Notes	Wgt.
1/8	1075	115	3.2	42Y	U6521	Sleeve	REV	C	**	3	49	2,5,7	13
1/6	1075	115	3.0	48Y	UH1016	Ball	REV	D	**	5	49	1,3,7	13
1/4	1075	115	4.0	48Y	US1026	Sleeve	REV	D	**	4	49	3,7	13
1/3	1075	115	4.9	48Y	UH1036	Ball	REV	D	**	7	50	3,7	13

### Approximate Dimensions

Ref.	BM	R	C	N	T
1	3.59	4.33	6.79	2.625	.5
2	4.09	4.83	7.89	3.25	.5
3	3.875	4.625	7.3125	2.92	.75
4	4.3125	4.92	7.85	2.9375	.625
5	4.24	4.80	8.5	3.78	.88
6	4.625	5.8125	8.125	2.9375	.625

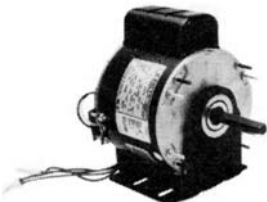


42Y



48Y

Notes:  
1. 3.5" Shaft Height  
2. 2.6" Shaft Height  
3. 4 thru bolts and 4 dummy studs on a 5.15 dia. bolt circle  
5. 3 thru bolts on a 4.42 dia. bolt circle  
6. .36" leads  
7. .60" leads  
\*\*Base included



Type D

## Double Shaft Fan/Blower Motors

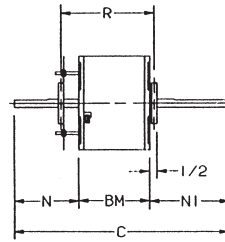


Room Air Conditioners - Fan Coils - Blowers

HP	RPM/ Speeds	Volts	Amps		Stock Number	Capac.	Ring* Type	Dim. Ref	Conn. Dia.	Wgt.
			Rated	Max.						
1/3	1625/3	208-230	2.0	2.8	RA1034	5/370V	D	5	20	15
1/3	1625/3	208-230	1.9	2.6	RA1036	5/370V	D	7	20	15
1/2	1075/3	208-230	2.7	3.4	RA1056	7.5/370V	D	12	20	18

### Approximate Dimensions

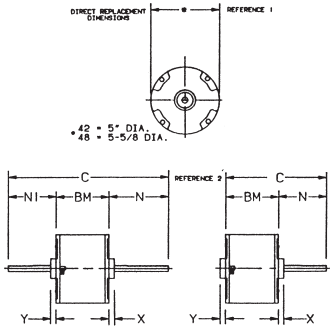
Ref.	BM	C	N	N1	Max.	Min.
5	4-5/16	20	7-11/16	8	6-5/16	5-1/16
7	4-9/16	20	8-3/16	7-1/4	6-9/16	5-5/16
12	5-1/16	20	7-11/16	7-1/4	7-1/16	5-13/16



### "CONSERVATIONIST"

- Auto Protector
- CCWLE Rotation
- Continuous Air Over
- Energy Efficient
- Length Adaptor and 2-1/4"– 2-1/2" Res. Rings\*\*
- PSC
- Semi-enclosed Construction
- Sleeve Bearing
- 1/2" Dia. – Double Shaft
- 14" Leads (Minimum)
- 40°C Ambient
- 48 Frame (5-1/4" Dia.)
- 60 HZ

## O.E.M. Motors - Direct Replacement



1/2 diameter shaft unless otherwise specified  
48" frame unless otherwise specified  
R= ring-to-ring dimension when applicable



**CARRIER**  
Stock No. **OCA10206**

**1/5 HP, 208-230V, 1050 RPM, 2 spd, 1.3 amps, Reversible Rotation**  
Outdoor Condenser Fan for "The Round One." Lug Mount Replaces Part No. F48SD6MA22, SD6MA4, SD6MA11, SD6MA6, SD6MA16. Use with 5 MFD 440 VAC Capacitor. Dimensions ref. (2) BM = 3-3/8", C = 3.0", N = 4-5/16", X/Y = 5/16"

**Wgt.**  
10



**CARRIER**  
Stock No. **OCA1036**

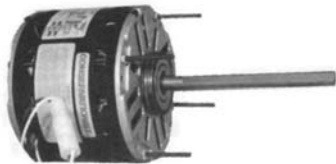
**1/3 HP, 208-230V, 1075/870 RPM, 2.5 amps, Reversible Rotation**  
Ball Bearing, 1/3 HP Version of OCA10206. Outdoor Condenser Fan Motor for "The Round One." Lug Mount, 7" BC. Use with 5 MFD, 370 VAC Capacitor. Dimensions ref. (2) BM = 4-1/2", C = 8-13/16", N = 4-1/4", X/Y = 7/16"

**Wgt.**  
16



HP	RPM	Speeds	Volts	Amps	Stock Number	Rot.	Capacitor	Shaft Dia. & Length	Motor Dia.	"A" Dim.	Conn. Dia. No.	Cross Reference
1/5	1075	1	208-230	1.4	OYK6518	CWLE	5MFD/370V	6-3/8 x 1/2 x 6-5/16"	5"	3-7/8"	58	024-20795-700
1/2	1050	1	230	4.3	OYK1056	CWLE	5MFD/370V	9-3/8 x 1/2 x 9-3/8"	5-5/8"	5-1/4"	58	024-20797-700

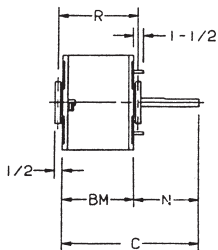
## High Efficiency Indoor Blower Motors - Furnaces - Air Handlers - Evaporators



### “CONSERVATIONIST”

- Auto Protector
- Continuous Air Over
- High Efficiency
- Multiple Mount
- Open Construction
- PSC
- Reversing Plug
- Sleeve Bearing
- 1/2" Dia. – Flatted Shaft
- 2-1/4"- 2-1/2" Resilient Rings
- 26" Leads (Minimum)
- 40°C Ambient
- 48 Frame (5-5/8" Dia.)
- 60 HZ
- 3 Speed

HP	RPM/Speeds	Volts	Amps Rated	Amps Max.	Stock Number	Capac.	Ring* Type	Dim. Ref	Conn. Dia.	Notes	Speed
1/4	1075	208-230	1.5	1.9	FD1026	5/370V	D	4	10		3
1/3	1075	208-230	2.1	3.0	FD1036	5/370V	D	18	10		3
1/2	1075	208-230	2.7	3.4	FD1056	7.5/370V	D	8	10		3
1	1075/3	115	12.3	14.0	BDL1106	20/370V	E	11	10	2	3
1	1075/3	208-230	5.1	6.5	BD1106	20/370V	E	12	10	2	3



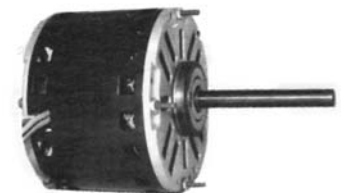
### Approximate Dimensions

Ref.	BM	R	C	N
4	4-1/16	4-5/8	10-1/2	6-7/16
8	5-3/16	5-3/4	11-1/2	6-7/8
11	5-13/16	6-3/8	12-1/4	6-7/16
12	5-9/16	6-1/16	12	6-7/16
18	4-11/16	5-1/4	11	6-7/16

Notes:  
2. Ball bearing, 1/2" double flat shaft, 2-1/2" rings

## Standard Efficiency Indoor Blower Motors

Furnaces - Air Handlers - Blowers



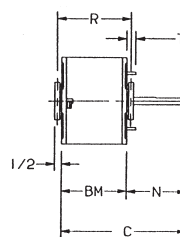
STANDARD EFFICIENCY, replaces GE 3583, 84, 85, 86, 87, 88, 89, 90

HP	RPM/Speeds	Volts	Amps Rated	Amps Max.	Stock Number	Capac.	Ring* Type	Dim. Ref	Conn. Dia.	Wgt.
1/4	1075/3	115	3.5	4.6	DL1026	5/370V	C	1	51	12
1/3	1075/3	115	4.9	6.4	DL1036	7.5/370V	C	2	51	14
1/2	1075/3	115	6.5	9.0	DL1056	10/370V	C	3	51	16
3/4	1075/3	115	8.9	10.3	DL1076	15/370V	D	5	52	19

\* For ring type

### Approximate Dimensions

Ref.	BM	R	C	N	T
1	4-1/16	4-5/8	8-1/2	4-7/16	1/2
2	4-5/16	4-7/8	8-3/4	4-7/16	1/2
3	5-1/16	5-5/8	9-1/2	4-7/16	1/2
5	5-5/8	6-5/16	10-1/8	4-1/2	1-5/8



Add adapter  
FM55  
Fleximount

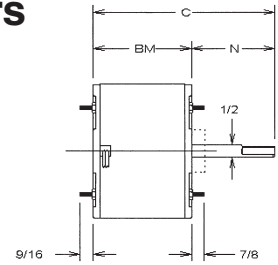
- Auto Protector
- Class “B” Insulation
- Continuous Air Over
- Lead Reversible
- Open Construction
- PSC
- Ring adapters included
- Sleeve Bearing
- Standard Efficiency
- Three Speed
- 2-1/4" or 2-1/2" Rings
- 26" Leads
- 40°C Ambient
- 48 Frame (5-3/8" Dia.)
- 60 HZ only

## Totally Enclosed Outdoor Sleeve Bearing Fan Motors

Condensers - Heat Pump - Refrigeration



- All Angle Mount
- Auto Protector
- Class "B" Insulation
- Energy Efficient
- Ext. Thru Bolts - Both Ends
- Permanent Split Capacitor
- Reversing Plug
- Sleeve Bearing
- 1/2" Dia. Shaft - Dbl. Flat
- 4, 6, & 8-Pole
- 26" Leads
- 48 Frame (5-5/8" Dia.)
- 60°C Ambient
- 60 HZ



### "TURN-A-BOUT" (CAPACITOR NOT INCLUDED)

HP	RPM/Speeds	Volts	Amps Rated	Amps Max.	Stock Number	Capac.	Dim. Ref	Conn. Dia.
1/6	825/1	208-230	1.1	1.6	FSE1018S	5/370V	12	15
1/4	1075/1	208-230	1.3	1.8	FSE1026SV1	5/370V	2	15
1/4	825/1	208-230	1.5	1.9	FSE1028S	5/370V	13	15
1/3	1075/1	208-230	1.8	2.8	FSE1036SV1	7.5/370V	10	15
1/3	825/1	208-230	1.8	2.4	FSE1038S	7.5/370V	8	15
1/2	1075/1	208-230	2.8	4.0	FSE1056SV1	10/370V	11	15
1/2	825/1	208-230	2.7	3.7	FSE1058S	10/370V	9	15
3/4	1075/1	208-230	4.9	5.2	FSE1076SV1	15/370V	5	64

### Approximate Dimensions

Ref.	BM	C	N
2	4-5/16	10-5/16	6
5	5-5/8	12-1/16	6-7/16
8	5-3/16	11-3/16	6
9	5-11/16	11-11/16	6
10	4-7/8	10-7/8	6
11	5-3/8	11-3/8	6
12	4-3/16	10-3/16	6
13	4-15/16	10-15/16	6

## Outdoor Ball Bearing Fan Motors

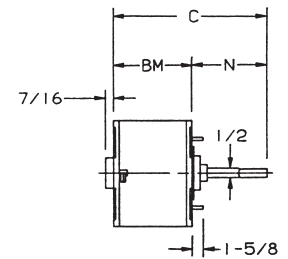
Condensers - Heat Pump - Refrigeration



- Auto Protector
- Ball Bearing
- Class "B" Insulation
- Closed Except Lead End
- Energy Efficient
- Lead Reversible
- Permanent Split Capacitor
- Shaft Slinger
- Vert. Up or Horiz. Mount
- 1/2" Dia. Shaft - Dbl. Flat
- 26" Leads
- 48 Frame (5-5/8" Dia.)
- 60°C Ambient
- 60 HZ

### Approximate Dimensions

Ref.	BM	C	N
3	4-13/16	11-1/4	6-7/16
5	5-9/16	12	6-7/16



### "CONSERVATIONIST" - SEMI-ENCLOSED

HP	RPM/Speeds	Volts	Amps Rated	Amps Max.	Stock Number	Capac.	Dim. Ref	Conn. Dia.	Notes	Wgt.
1/3	1075/750	208-230	1.7	2.6	F1036	7.5/370V	3	13		16
1/2	825	208-230	2.9	3.4	F1058	10/370V	5	55		19

## Totally Enclosed Outdoor Ball Bearing Fan Motors

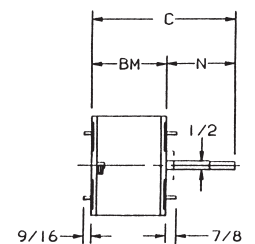
Condensers - Heat Pump - Refrigeration



- All Angle Mount
- Auto Protector
- Class "B" Insulation
- Energy Efficient
- Ext. Thru Bolts - Both Ends
- 1/2" Dia. Shaft - Dbl. Flat
- 26" Leads
- 48 Frame (5-5/8" Dia.)
- 60°C Ambient
- 60 HZ
- Permanent Split Capacitor
- Reversing Plug

### Approximate Dimensions

Ref.	BM	C	N
10	5-5/16	8-5/8	3-5/16



### "CONSERVATIONIST" "TURN-A-BOUT" 1 AND 2-SPEED

HP	RPM/Speeds	Volts	Amps Rated	Amps Max.	Stock Number	Capac.	Dim. Ref	Conn. Dia.	Notes	Wgt.
1/2	1050	460	.9	1.1	FEH1056S	10/370V	10	17		19

## Outdoor Ball Bearing Condenser Fan Motors



- Auto Protector
- Ball Bearing
- Base Mounted
- Capac. Mounted (1Ø)
- Conduit Box
- Open Lead End Only
- Reversible
- 60 HZ

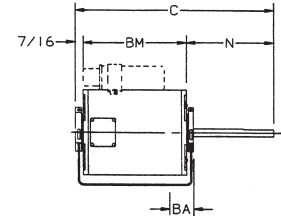
### Approximate Dimensions

Ref.	BM	C	N	Shaft Height	BA
1	7-1/4	12-1/2	5	3	2-1/2

### SINGLE PHASE - PSC

Important: Use amps as well as HP for replacement reference.

HP	RPM	Volts	Max Amps @230V	Frame	Stock Number	Shaft	Base	Dim. Ref	Conn. Dia.	Wgt.
1/2	1075	208-230/460	5.2	48	FB1056	1/2" Flat	Resilient	1	42	22

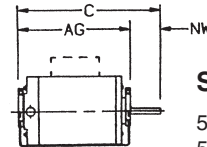


## Three Phase ODP Resilient Base Motors

Pumps, Blowers, Conveyors, Industrial Duty



- Ball & Sleeve Bearing
- Continuous Duty
- Open Drip Proof
- 40°C Ambient
- 60HZ



### Shaft Dimensions

56 = 5/8" Keyed x 1-7/8"  
56H = 5/8" Keyed x 1-7/8"

HP	RPM	FL Volts	Amps	S.F.	Frame	Stock Number	Bearings	Prot.	Approx. "C"	Dim. "AG"	Conn. Dia.	Wgt.
3/4	1725	208-230/460	2.6/1.3	1.25	56	RB3074A	Ball	Auto	11.3	9.1	35	24
1	1725	208-230/460	3.2/1.6	1.15	56	RB3104A	Ball	Auto	11.8	9.6	35	31
1-1/2	1725	208-230/460	4.6/2.3	1.15	56H	RB3154A	Ball	Auto	11.8	9.6	35	30
2	1725	208-230/460	5.8/2.9	1.15	56H	RB3204A	Ball	Auto	12.8	10.6	35	41

## Three Phase ODP Rigid Base Motors



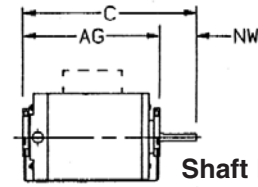
- Ball Bearing
- Continuous Duty
- Heavy Duty Steel Construction
- Open Drip Proof
- 40°C Ambient
- 60HZ

HP	RPM	Volts	FL Amps	S.F.	Frame	Stock Number	Prot.	Approx. "C"	Dim. "AG"	N.P. Eff.%	Conn. Dia.	Wgt.
2	1725	200-230/460	6.8/3.4	1.15	145T	OB3204T	None	13.2	10.6	78	34	41

## Capacitor Start Resilient Base Motors



- Class "B" Insulation
- Energy Efficient (see notes)
- High Start Torque
- Open - TEAO
- Reversible
- Sleeve & Ball Bearing
- Suitable for 208 Volts at 1.0 S.F.
- 2, 4 and 6 Pole
- 40°C Ambient
- 60 HZ



**Shaft Dimensions**

48 = 1/2" Flat x 1-5/8"  
56 = 5/8" Keyed x 1-7/8"

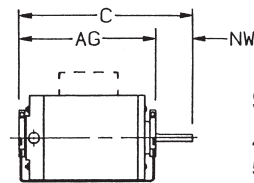
HP	RPM	Volts	FL Amps	S.F.	Frame	Stock Number	Bearings	Prot.	Approx. "C"	Dim. "AG"	En-close	Conn. Dia.	Notes	Wgt.
1/2	1725	115/230	8.6/4.3	1.00	56	RS1051A	Sleeve	Auto	10.3	8.1	Open	38		18
1/2	1725	115/230	8.8/4.4	1.25	56	RS1054A	Sleeve	Auto	10.3	8.1	Open	38		25
1/2	3450	115/208-230	7.2/3.6	1.6	56	BK1052	Ball	Auto	10.9	8.7	Open	22	5,6,7,8	19
1/2	1725	115/208-230	7.6/3.8	1.25	56	BK1054	Ball	Auto	11.6	9.4	Open	22	5,6,7,8	22
3/4	3450	115/208-230	10.0/5.0	1.5	48	BF1072	Ball	Auto	11.1	9.2	Open	22	5,6,7,8	22
3/4	3450	115/208-230	10.0/5.0	1.5	56	BK1072	Ball	Auto	11.6	9.4	Open	22	5,6,7,8	22
1	1725	115/230	14.2/7.1	1.25	56H	RS1104A	Sleeve	Auto	11.8	9.6	Open	38		31
1	3450	115/208-230	12.6/6.3	1.4	48	BF1102	Ball	Auto	11.6	9.7	Open	22	5,6,7,8	24
1-1/2	1725	115/230	16.4/8.2	1.2	56H	RB1154A	Ball	Auto	12.8	10.6	Open	38		41
2	1725	115/208-230	24.6/12.3	1.15	56	RB1204A	Ball	Auto	12.8	10.6	Open	38		44
2	3450	115/208-230	21.2/10.6	1.2	56H	BK1202	Ball	Auto	14.2	12.0	Open	22	5,6,7,8	39
2	1725	115/208-230	25/12.5	1.15	56H	BK1204	Ball	Auto	15.3	13.1	Open	22	5,6,7,8	46

- Notes:
- 5. Sealed switch design
  - 6. Start capacitor inside
  - 7. Terminal board
  - 8. Moderate start torque
  - 9. 50 HZ
  - 10. Energy efficient - split phase start/capacitor run

## Split Phase Resilient Base Motors Belt Drive and Blower Applications



- Class "B" Ins.
- Continuous Duty
- Energy Efficient (see notes)
- Open and TEAO
- Reversible
- Single and Two Speed
- Sleeve & Ball Bearing
- 60 HZ (50 HZ per notes)



**Shaft Dimensions**

48 = 1/2" Flat x 1-5/8"  
56 = 5/8" Keyed x 1-7/8"

### SPLIT PHASE - NEMA AND UNITY SERVICE FACTOR

HP	RPM	Volts	FL Amps	S.F.	Frame	Stock Number	Bearings	Prot.	Approx. "C"	Dim. "AG"	En-close	Conn. Dia.	Notes	Wgt.
1/4	1725	115	4.6	1.35	48/56	GF2024	Sleeve	Auto	9.2	7.3	Open	39	1	14
1/3	1725	115	5.9	1.35	48/56	GF2034	Sleeve	Auto	9.4	7.5	Open	39	1	16
1/3	1725	230	3.3	1.35	48	GF2038	Sleeve	Auto	9.4	7.5	Open	39	9	16
1/2	1725	115	7.2	1.25	48/56	GF2054	Sleeve	Auto	9.9	8.0	Open	39		
1/2	1725	115/230	8.8/4.4	1.25	56	RB2054D	Ball	Auto	10.0	8.1	Open	38	7	
3/4	1725	115	10.9	1.25	56	GK2074	Sleeve	Auto	10.8	8.9	Open	39		

- Notes:
- 1. 48/56 FR = 1/2" x 1.5" Shaft with 5/8" shaft adapter - 48/56 slotted 3" height base
  - 7. 1/2" extended thru bolts, shaft end
  - 9. Suitable for 208V at 1.0 S.F.

## Oil Burner Motor

### Features

Applications: Domestic high and low pressure oil burners and other applications where 48M and 48N flange mounting is required.

This line of motors includes open (enclosed except for shaft end bracket) and totally enclosed designs to meet all requirements. All mounting dimensions such as location of ears, diameter of rabbet fit and shaft size are in accordance with NEMA standards. Most of the normally stocked replacement ratings feature the **external reversing switch** for ease of use in those tight, dark and dirty locations. All ratings include sleeve bearings for quiet operation and manual reset thermal overload protectors for safe, dependable use.



Reversible Switch Model Oil Burner Motor

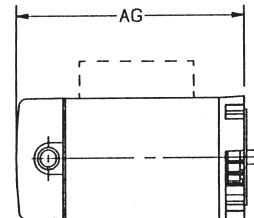
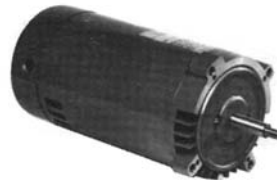
**SPLIT PHASE, 60 HZ, ENCLOSED, REVERSIBLE, FACTORY CONNECTED FOR CW ROTATION**

HP	RPM	Volts	Approx. F. L. Amps	S.F.	Frame	Stock Number	Bearings	Prot.	Dim. Ref.	Notes	Wgt.
1/8	1725	115	2.5	1.0	48N	EL2005	Sleeve	Manual	1	1,3	8
1/6	1725	115	3.2	1.0	48N	XEL2014	Sleeve	Manual	3	1,3	11

### Approximate Dimensions

Ref.	C	AG	N	AK	AJ
1	7.16	5.22	1.82	6.37	7.25
3	7.66	5.72	1.82	6.37	7.25

## Round Flange Jet Pump Motors



**Important: Total output (HP x service factor) of replacement motor must equal or exceed motor being replaced.**

HP	RPM	Voltage	Max. Amps	S.F.	Frame	Stock Number	Shaft	Rotation	Approx. "AG"	Conn. Dia.	Wgt.
1/3	3450	115/230	8.6/4.3	1.8	56C	K1032	Key	Rvrsble	8-1/4	22	15
1/2	3450	115/230	10.8/5.4	1.6	56C	K1052	Key	Rvrsble	8-5/8	22	16
3/4	3450	115/230	14.8/7.4	1.5	56C	K1072	Key	Rvrsble	9-1/2	22	19
1	3450	115/230	16.2/8.1	1.4	56C	K1102	Key	Rvrsble	10	22	22
1-1/2	3450	115/230	22/11	1.3	56C	K1152	Key	Rvrsble	11-5/16	22	28

- Auto Protector
- Ball Bearings
- Capacitor Start
- Carbon Keyed and 416 Stainless Thrd. Shaft
- CCWPE & Dual Rotation
- Continuous Duty
- High Service Factors
- Internally Mtd. Capacitor
- NEMA "56C" Mount
- Open Drip Proof
- Sealed switch design
- 40°C Ambient
- 60 HZ
- "778" Design