
MANUFACTURERS INDEX, SECTION 1

CAIN DUCT CONNECTORS	1-33
CERTAINTED DUCT WRAP	1-34
DEFLECTO ALUMINUM VENTS	1-31
DEFLECTO CHIMNEY LINERS.	1-48
DUCT FITTINGS	1-23 – 1-31
DUCT LINER/ADHESIVES/TAPE	1-34
FRASER-JOHNSTON FURNACES.	1-2 – 1-17
GENERAL HUMIDIFIERS	1-18 – 1-20
GREY FLEX	1-32
HARD CAST DUCT LINER GLUE	1-34
HART & COOLEY REGISTERS & GRILLES	1-38 – 1-47
SIMPSON DURAVENT B-VENT	1-35 – 1-37
ULTRAVATION AIR CLEANERS	1-21
ULTRAVATION U.V. AIR PURIFIERS	1-22

FRASER-JOHNSTON®

Heating ■ Air Conditioning

UP TO 98%
MODULATING (ECM MOTOR)
GAS-FIRED RESIDENTIAL
MULTI-POSITION GAS FURNACES

MODELS: TP9C

NATURAL GAS
60 - 120 MBH INPUT



DESCRIPTION

These compact units employ induced combustion, reliable hot surface ignition and high heat transfer aluminized tubular heat exchangers. The units are factory shipped for installation in upflow or horizontal applications and may be converted for downflow applications.

These furnaces are designed for residential installation in a basement, closet, alcove, attic, recreation room or garage and are also ideal for commercial applications. All units are factory assembled, wired and tested to assure safe dependable and economical installation and operation.

These units are Category IV listed and may be vented either through side wall or roof applications using approved plastic combustion air and vent piping.

WARRANTY

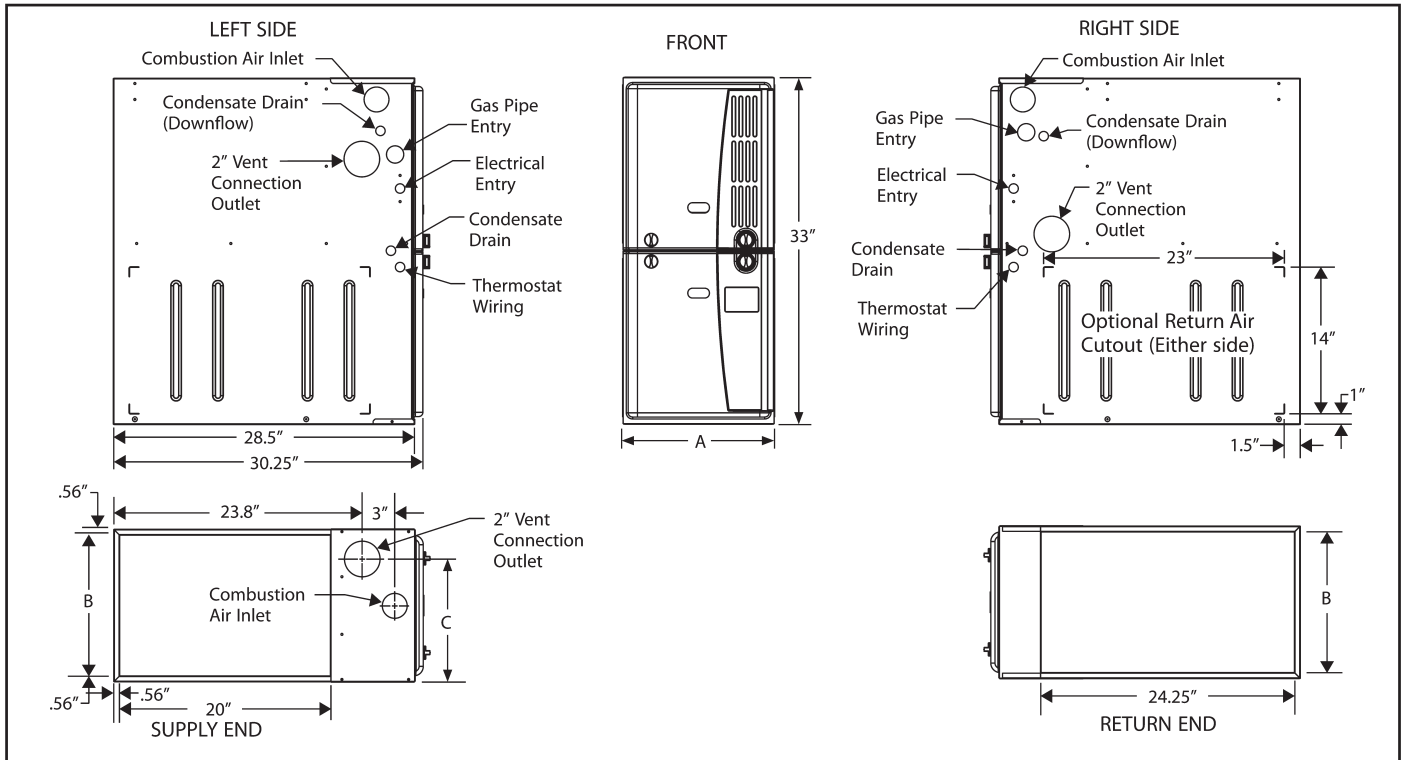
Lifetime limited warranty on both heat exchangers to the original purchaser; a 20-year limited warranty from original installation date to subsequent purchaser.

Lifetime warranty on the heat exchanger in commercial applications.
10 year limited parts warranty.

FEATURES

- Modulating heating operation includes:
 - Modulating gas valve, inducer and circulating blower
 - Modulating operation from 100% to 35% input in 100% increments with nearly constant temperature rise.
- Easily applied in upflow, horizontal left or right, or downflow installation with minimal conversion necessary.
- Compact, easy to install, ideal height 33" tall cabinet.
- ECM variable speed drive for cooling SEER enhancement, improved comfort with optional airflow delay profiles, and continuous fan options for IAQ performance.
- Easy access to controls to connect power/control wiring.
- Built-in, high level self diagnostics with fault code display.
- Low unit amp requirement for easy replacement application.
- All models are convertible to use propane (LP) gas.
- Electronic Hot Surface Ignition saves fuel cost with increased dependability and reliability.
- 100% shut off main gas valve for extra safety.
- 24V, 40 VA control transformer and blower relay supplied for add-on cooling.
- Hi-tech tubular aluminized steel primary heat exchanger with stainless steel tube/aluminum fin secondary heat exchanger for outstanding efficiency.
- Solid removable bottom panel allows easy conversion.
- Airflow leakage less than 1% of nominal airflow for ductblaster conditions.
- No knockouts to deal with, making installation easier.
- Movable duct connector flanges for application flexibility.
- Quiet inducer operation, burner, and blower operation.
- Inducer rotates for easy conversion of venting options.
- Fully supported blower assembly for easy access and removal of blower.
- External air filters used for maximum flexibility in meeting customers IAQ needs.
- Insulated blower compartment for thermal and acoustic performance.
- 1/4 turn knobs provided for easy independent door removal.
- Internal condensate trap design (patent pending) provides condensate management options, easy visual operation check, and is self priming to prevent nuisance problems.

Due to continuous product improvement, specifications are subject to change without notice.



CABINET AND DUCT DIMENSIONS

Models	Nominal CFM (m ³ /min)	Cabinet Size	Cabinet Dimensions (Inches)			Approximate Operating Weights Lbs
			A	B	C	
TP9C060B12MP11	1200	B	17-1/2	16-3/8	13-1/4	122
TP9C080B12MP11	1200	B	17-1/2	16-3/8	14-3/4	126
TP9C080C16MP11	1600	C	21	19-7/8	16-1/2	136
TP9C100C16MP11	1600	C	21	19-7/8	18-1/4	142
TP9C100C20MP11	2000	C	21	19-7/8	18-1/4	145
TP9C120D20MP11	2000	D	24-1/2	23-3/8	21-3/4	156

RATINGS & PHYSICAL / ELECTRICAL DATA

Models	Input Max/Min MBH	Output Max/Min MBH	AFUE %	Nominal Airflow CFM	Total Unit Amps	Air Temp Rise Max Input °F	Air Temp Rise Min Input °F
TP9C060B12MP11	60/21	58/20	97.5	1200	7.0	40-70	20-50
TP9C080B12MP11	80/28	77/27	97.5	1200	7.5	40-70	20-50
TP9C080C16MP11	80/28	78/27	97.7	1600	10.0	40-70	20-50
TP9C100C16MP11	100/35	97/34	97.7	1600	10.0	40-70	20-50
TP9C100C20MP11	100/35	97/34	97.7	2000	12.0	45-75	25-55
TP9C120D20MP11	120/42	116/40	98.0	2000	12.0	45-75	25-55

Models	Max. Outlet Air Temp °F	Blower		Blower Wheel Size	Max Over-Current Protect	Min. wire Size (awg) @ 75 ft one way
		HP	Amps			
TP9C060B12MP11	170	1/2	4.8	11 x 8	15	14
TP9C080B12MP11	175	1/2	4.8	11 x 8	15	14
TP9C080C16MP11	175	3/4	7.5	11 x 10	15	14
TP9C100C16MP11	175	3/4	7.5	11 x 10	15	14
TP9C100C20MP11	180	1	14.5	11 x 11	20	12
TP9C120D20MP11	180	1	14.5	11 x 11	20	12

Annual Fuel Utilization Efficiency (AFUE) numbers are determined in accordance with DOE Test procedures. Wire size and over current protection must comply with the National Electrical Code (NFPA-70-latest edition) and all local codes.

FRASER-JOHNSTON®

Heating ■ Air Conditioning

96% TWO STAGE
GAS-FIRED RESIDENTIAL
MULTI-POSITION GAS FURNACES

MODELS: TM9T

NATURAL GAS
60 - 120 MBH INPUT



Due to continuous product improvement, specifications are subject to change without notice.

DESCRIPTION

These compact units employ induced combustion, reliable hot surface ignition and high heat transfer aluminumized tubular heat exchangers. The units are factory shipped for installation in upflow or horizontal applications and may be converted for downflow applications.

These furnaces are designed for residential installation in a basement, closet, alcove, attic, recreation room or garage and are also ideal for commercial applications. All units are factory assembled, wired and tested to assure safe dependable and economical installation and operation.

These units are Category IV listed and may be vented either through side wall or roof applications using approved plastic combustion air and vent piping.

WARRANTY

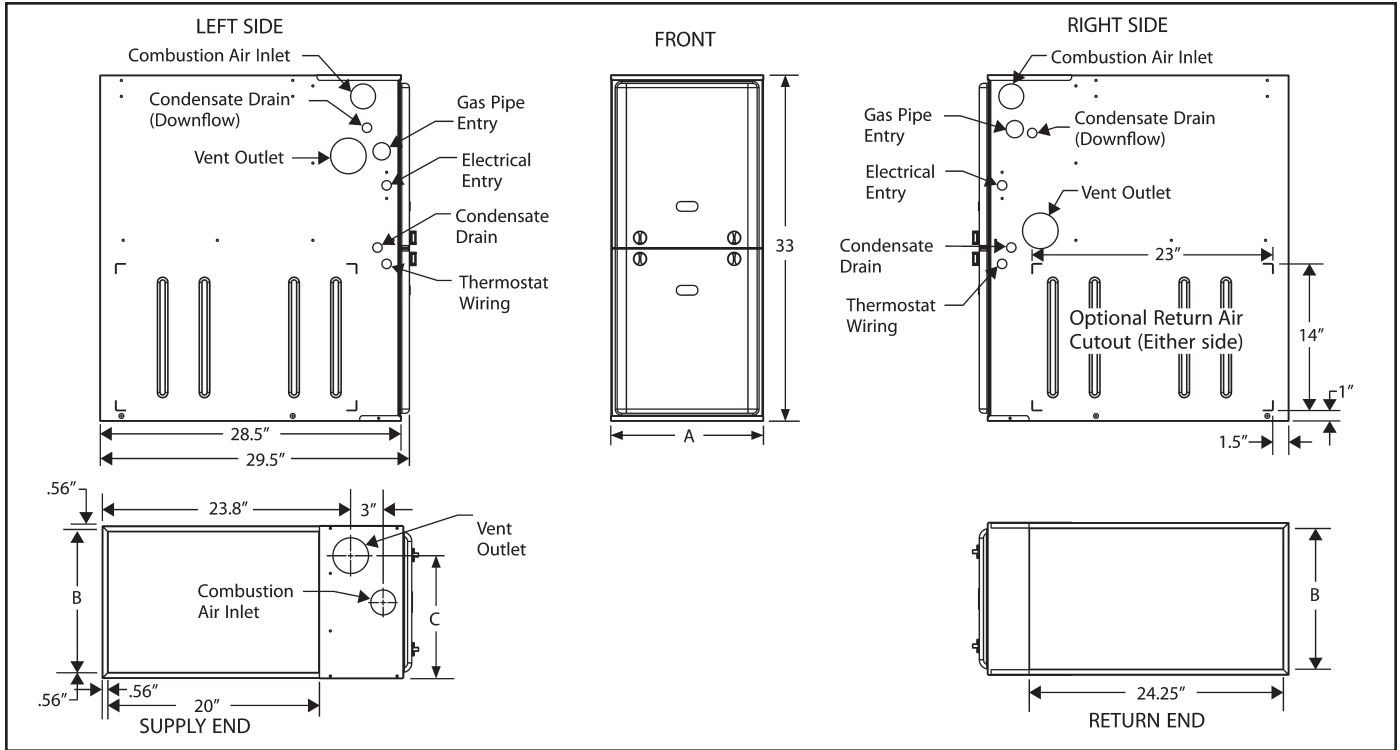
Lifetime limited warranty on both heat exchangers to the original purchaser; a 20-year limited warranty from original installation date to subsequent purchaser.

10-year warranty on the heat exchanger in commercial applications.
5-year limited Parts warranty.

Extended 10-year limited parts warranty when product is registered online within 90 days of purchase for replacement or closing for new home construction.

FEATURES

- Two stage heating operation includes two stage gas valve, two stage inducer operation and 4 speed, direct drive PSC motor blower operation. Adjustable delay timer allows two stage operation with a single stage thermostat.
- Easily applied in upflow, horizontal left or right, or downflow installation with minimal conversion necessary.
- Compact, easy to install, ideal height 33" tall cabinet.
- Blower-off delay for cooling SEER improvement.
- Easy access to controls to connect power/control wiring.
- Built-in, high level self diagnostics with fault code display.
- Low unit amp requirement for easy replacement application.
- All models are convertible to use propane (LP) gas.
- Electronic Hot Surface Ignition saves fuel cost with increased dependability and reliability.
- 100% shut off main gas valve for extra safety.
- 24V, 40 VA control transformer and blower relay supplied for add-on cooling.
- Hi-tech tubular aluminumized steel primary heat exchanger with stainless steel tube/aluminum fin secondary heat exchanger for outstanding efficiency.
- Solid removable bottom panel allows easy conversion.
- Airflow leakage less than 1% of nominal airflow at ductblaster conditions.
- No knockouts to deal with, making installation easier.
- Movable duct connector flanges for application flexibility.
- Quiet inducer operation.
- Inducer rotates for easy conversion of venting options.
- Fully supported blower assembly for easy access and removal of blower.
- External air filters used for maximum flexibility in meeting customers IAQ needs.
- Insulated blower compartment for thermal and acoustic performance.
- 1/4 turn knobs provided for easy independent door removal.
- Internal condensate trap design (patent pending) provides condensate management options, easy visual operation check, and is self priming to prevent nuisance problems.
- Protection included from air intake, exhaust vent or condensate blockage.
- Venting applications maybe installed as either 2 pipe sealed combustion or single pipe vent using indoor combustion air.



CABINET AND DUCT DIMENSIONS

BTUH (kW) Input	Nominal CFM (m ³ /min)	Cabinet Size	Cabinet Dimensions (Inches)			Approximate Operating Weights Lbs
			A	B	C	
TM9T060B12MP11	1200	B	17 1/2	16 3/8	13 1/4	122
TM9T080B12MP11	1200	B	17 1/2	16 3/8	14 3/4	126
TM9T080C16MP11	1600	C	21	19 7/8	16 1/2	136
TM9T100C16MP11	1600	C	21	19 7/8	18 1/4	142
TM9T100C20MP11	2000	C	21	19 7/8	18 1/4	145
TM9T120D20MP11	2000	D	24 1/2	23 3/8	21 3/4	156

RATINGS & PHYSICAL / ELECTRICAL DATA

Model	Input High/Low	Output High/Low	Total Unit	AFUE	High Fire Air Temp. Rise	Low Fire Air Temp. Rise
	MBH	MBH	Amps	%	°F	°F
TM9T060B12MP11	60/39	58/37	10	96	35 - 65	35 - 65
TM9T080B12MP11	80/52	77/50	10	96	45 - 75	20 - 50
TM9T080C16MP11	80/52	77/50	11.5	96	45 - 75	25 - 55
TM9T100C16MP11	100/65	96/62	11.5	96	35 - 65	35 - 65
TM9T100C20MP11	100/65	96/62	17	96	45 - 75	20 - 50
TM9T120D20MP11	120/78	115/75	17	96	45 - 75	35 - 65

Model	Max. Outlet Air Temp	Blower		Blower Size	Max. Over-current Protect	Min. Wire Size (awg) @ 75 ft. One Way
	°F	HP	Amps	In.		
TM9T060B12MP11	170	0.50	7	11 x 8	15	14
TM9T080B12MP11	175	0.50	7	11 x 8	15	14
TM9T080C16MP11	175	0.75	8.8	11 x 10	15	14
TM9T100C16MP11	175	0.75	8.8	11 x 10	15	14
TM9T100C20MP11	175	1.00	14.5	11 x 11	20	12
TM9T120D20MP11	180	1.00	14.5	11 x 11	20	12

Annual Fuel Utilization Efficiency (AFUE) numbers are determined in accordance with DOE Test procedures. Wire size and over current protection must comply with the National Electrical Code (NFPA-70-latest edition) and all local codes. The furnace shall be installed so that the electrical components are protected from water.

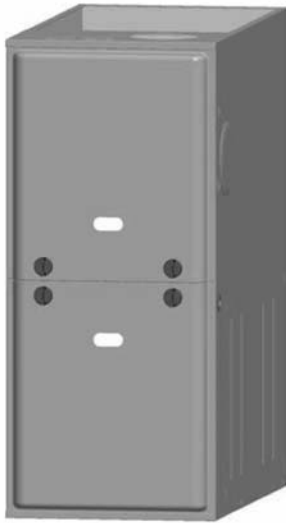
FRASER-JOHNSTON®

Heating ■ Air Conditioning

GAS-FIRED RESIDENTIAL TWO STAGE PSC MULTI-POSITION GAS FURNACES

MODELS: TM8T

NATURAL GAS
60 - 120 MBH INPUT



Due to continuous product improvement, specifications are subject to change without notice.

DESCRIPTION

These compact units employ induced combustion, reliable hot surface ignition and high heat transfer aluminized tubular heat exchangers. The units are factory shipped for installation in upflow or horizontal applications and may be converted for downflow applications.

These furnaces are designed for residential installation in a basement, closet, alcove, attic, recreation room or garage and are also ideal for commercial applications. All units are factory assembled, wired and tested to assure safe dependable and economical installation and operation.

These units are Category I listed and may be common vented with another gas appliance as allowed by the National Fuel Gas Code.

WARRANTY

20-year limited warranty on the heat exchanger.

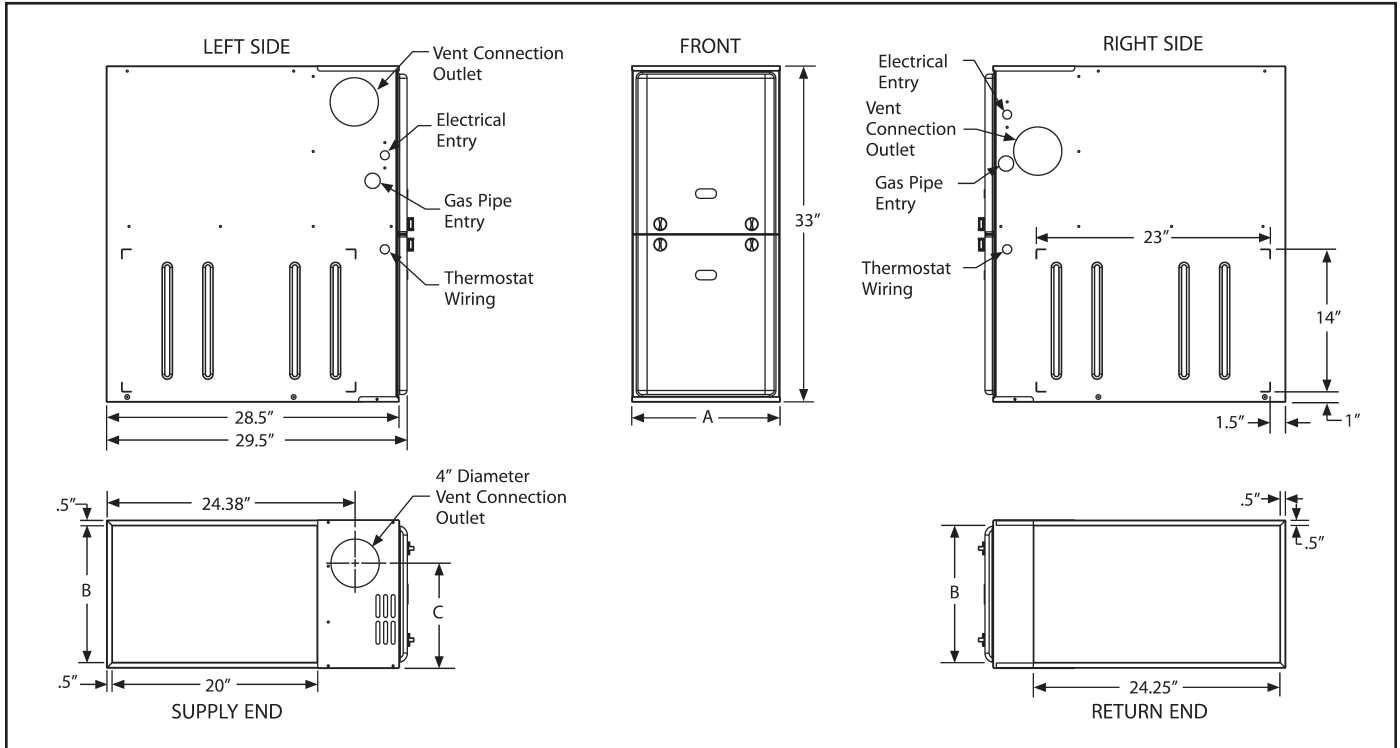
10-year heat exchanger warranty on commercial applications.

5-year limited parts warranty.

Extended 10-year limited parts warranty when product is registered online within 90 days of purchase for replacement or closing for new home construction.

FEATURES

- Two stage heating operation includes two stage gas valve, two stage inducer operation and 4 speed PSC blower operation. Adjustable delay timer allows two stage operation with a single stage thermostat.
- Easily applied in upflow, horizontal left or right, or downflow installation with minimal conversion necessary.
- Compact, easy to install, ideal height 33" tall cabinet.
- Blower-off delay for cooling SEER improvement.
- Easy access to controls to connect power/control wiring.
- Built-in, high level self diagnostics with fault code display.
- Low unit amp requirement for easy replacement application.
- All models are convertible to use propane (LP) gas.
- Electronic Hot Surface Ignition saves fuel cost with increased dependability and reliability.
- 100% shut off main gas valve for extra safety.
- 24V, 40 VA control transformer and blower relay supplied for add-on cooling.
- Hi-tech tubular aluminized steel primary heat exchanger.
- Solid removable bottom panel allows easy conversion.
- Airflow leakage less than 1% of nominal airflow for ductblaster conditions.
- No knockouts to deal with, making installation easier.
- Movable duct connector flanges for application flexibility.
- Quiet inducer operation, burner, and blower operation.
- Inducer rotates for easy conversion of venting options.
- Fully supported blower assembly for easy access and removal of blower.
- External air filters used for maximum flexibility in meeting customers IAQ needs.
- Insulated blower compartment for thermal and acoustic performance.
- Low NOx models have been designed to meet specific code requirements.
- Venting applications - may be installed as a common vent with other gas-fired appliances or use a masonry chimney.
- 1/4 turn knobs provided for easy independent door removal.



CABINET AND DUCT DIMENSIONS

Models	Nominal CFM	Cabinet Size	Cabinet Dimensions (Inches)		
			A	B	C
TM8T060A12MP11	1200	A	14 1/2	13 3/8	10.3
TM8T080B12MP11	1200	B	17 1/2	16 3/8	11.8
TM8T080C16MP11	1600	C	21	19 7/8	13.6
TM8T100C16MP11	1600	C	21	19 7/8	13.6
TM8T100C20MP11	2000	C	21	19 7/8	13.6
TM8T120C20MP11	2000	C	21	19 7/8	13.6

RATINGS & PHYSICAL / ELECTRICAL DATA

Models	High Fire Input	Low Fire Input	High Fire Output	Low Fire Output	Nominal Airflow	AFUE	Max. Over-current Protect	Max. Outlet Air Temp.
	MBH	MBH	MBH	MBH	CFM	%		°F
TM8T060A12MP11	60	39	48	31	1200	80.0	10	160
TM8T080B12MP11	80	52	64	42	1200	80.0	10	160
TM8T080C16MP11	80	52	64	42	1600	80.0	15	160
TM8T100C16MP11	100	65	80	52	1600	80.0	15	160
TM8T100C20MP11	100	65	80	52	2000	80.0	20	160
TM8T120C20MP11	120	78	96	62	2000	80.0	20	160
Models	High Fire Air Temp. Rise	Low Fire Air Temp. Rise	Blower		Blower Size	Total Unit Amps	Min. wire Size (awg) @ 75 ft one way	Operating weight
	°F	°F	HP	Amps	In.			Lbs.
TM8T060A12MP11	30-60	20-50	1/3	4.8	11 x 8	7.0	14	94
TM8T080B12MP11	30-60	20-50	1/3	4.8	11 x 8	7.0	14	103
TM8T080C16MP11	30-60	20-50	1/2	7.0	11 x 10	10.0	14	114
TM8T100C16MP11	30-60	20-50	1/2	7.0	11 x 10	10.0	14	118
TM8T100C20MP11	30-60	20-50	1	14.5	11 x 11	17.0	12	122
TM8T120C20MP11	30-60	20-50	1	14.5	11 x 11	17.0	12	129

Annual Fuel Utilization Efficiency (AFUE) numbers are determined in accordance with DOE Test procedures. Wire size and over current protection must comply with the National Electrical Code (NFPA-70-latest edition) and all local codes. The furnace shall be installed so that the electrical components are protected from water.

FRASER-JOHNSTON®

Heating ■ Air Conditioning

95.5% SINGLE STAGE
GAS-FIRED RESIDENTIAL
MULTI-POSITION GAS FURNACES

MODEL: TG9S

NATURAL GAS
40 - 130 MBH INPUT



DESCRIPTION

These compact units employ induced combustion, reliable hot surface ignition and high heat transfer aluminumized tubular heat exchangers. The units are factory shipped for installation in upflow or horizontal applications and may be converted for downflow applications.

These furnaces are designed for residential installation in a basement, closet, alcove, attic, recreation room or garage and are also ideal for commercial applications. All units are factory assembled, wired and tested to assure safe dependable and economical installation and operation.

These units are Category IV listed and may be vented either through side wall or roof applications using approved plastic combustion air and vent piping.

WARRANTY

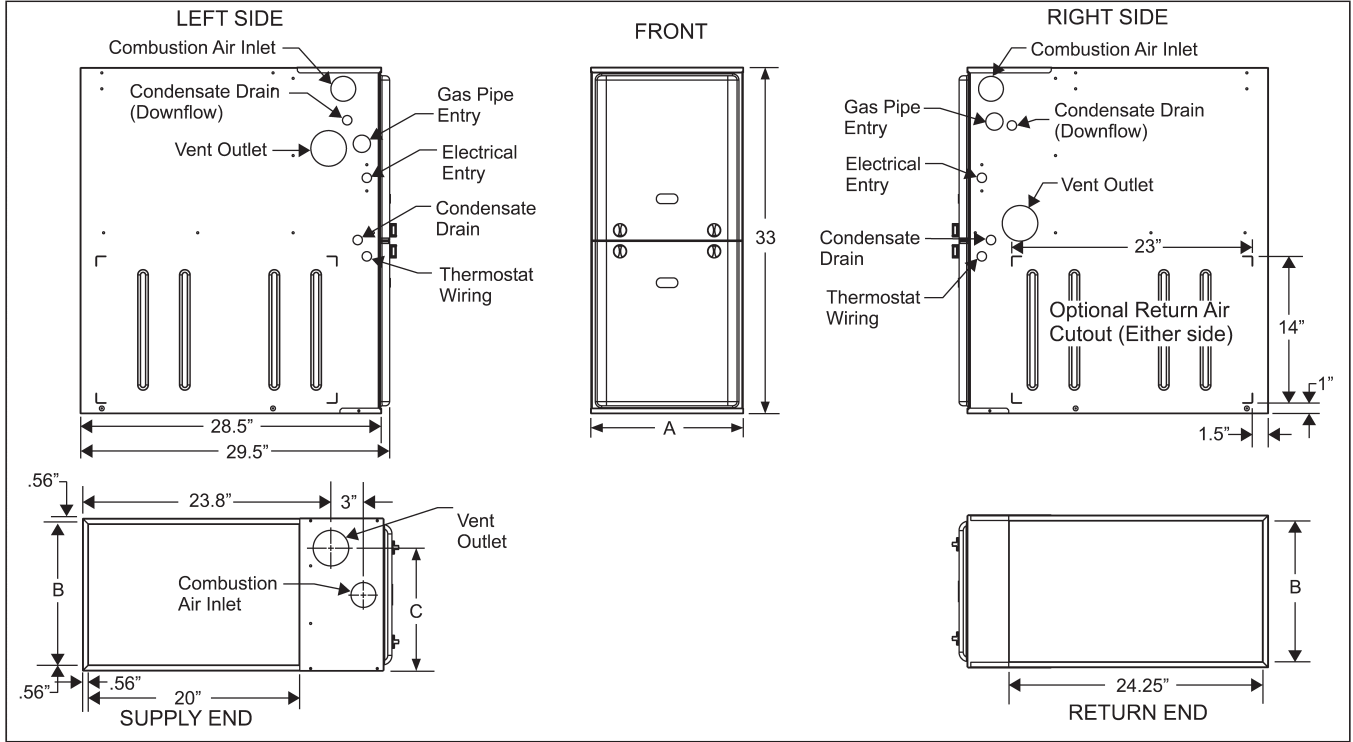
Lifetime limited warranty on the heat exchanger.

10-year heat exchanger warranty on commercial applications.

Extended 10-year limited parts warranty when product is registered online within 90 days of purchase for replacement or closing for new home construction.

FEATURES

- Easily applied in upflow, horizontal left or right, or downflow installation with minimal conversion necessary.
- Compact, easy to install, ideal height 33" tall cabinet.
- Blower-off delay for cooling SEER improvement.
- Easy access to controls to connect power/control wiring.
- Built-in, high level self diagnostics with fault code displays standard on integrated control module for reliable operation.
- Low unit amp requirement for easy replacement application.
- Single wire twinning or staging feature available.
- All models are convertible to use propane (LP) gas.
- Electronic Hot Surface Ignition saves fuel cost with increased dependability and reliability.
- 100% shut off main gas valve for extra safety.
- 4 speed, direct drive PSC motor.
- 24V, 40 VA control transformer and blower relay supplied for add-on cooling.
- Hi-tech tubular aluminumized steel primary heat exchanger.
- Secondary heat exchanger made of corrosion resistant stainless steel materials.
- Timed on, adjustable off blower capability for maximum comfort.
- Blower door safety switch.
- Solid removable bottom panel allows easy conversion.
- Airflow leakage less than 1% of nominal airflow at ductblaster conditions.
- No knockouts to deal with, making installation easier.
- Movable duct connector flanges for application flexibility.
- Quiet inducer operation.
- Inducer rotates for easy conversion of venting options.
- Fully supported blower assembly for easy access and removal of blower.
- External air filters used for maximum flexibility in meeting customers IAQ needs.
- Protection included from air intake, exhaust vent, or condensate blockage.
- Patent pending self priming internal condensate trap design for easy installation.
- Venting applications - may be installed as either 2-pipe (sealed combustion) or single-pipe vent (using indoor combustion air).
- No special vent termination required.
- 1/4 turn knobs provided for easy door removal.



CABINET AND DUCT DIMENSIONS

Models	Nominal CFM	Cabinet Size	Cabinet Dimensions (Inches)			Approximate Operating Weights Lbs
			A	B	C	
TG9S040A08MP11	800	A	14 1/2	13 3/8	11 3/4	113
TG9S060A10MP11	1000	A	14 1/2	13 3/8	11 3/4	118
TG9S060B12MP11	1200	B	17 1/2	16 3/8	13 1/4	122
TG9S080B12MP11	1200	B	17 1/2	16 3/8	14 3/4	126
TG9S080C16MP11	1600	C	21	19 7/8	16 1/2	136
TG9S080C22MP11	2200	C	21	19 7/8	16 1/2	139
TG9S100C16MP11	1600	C	21	19 7/8	18 1/4	142
TG9S100C20MP11	2000	C	21	19 7/8	18 1/4	145
TG9S120D16MP11	1600	D	24 1/2	23 3/8	21 3/4	153
TG9S120D20MP11	2000	D	24 1/2	23 3/8	21 3/4	156
TG9S130D20MP11	2000	D	24 1/2	23 3/8	No Hole	160

RATINGS & PHYSICAL / ELECTRICAL DATA

Input	Output MBH	Nominal Airflow CFM	Total Unit Amps	AFUE	Air Temp. Rise °F	Max Over-Current Protect	Min. wire Size (awg) @ 75 ft one way	Max. Outlet Air Temp °F
TG9S040A08MP11	38	800	8.0	95.5	30-60	15	14	155
TG9S060A10MP11	57	1000	10.0	95.5	30-60	15	14	155
TG9S060B12MP11	57	1200	10.0	95.5	30-60	15	14	160
TG9S080B12MP11	76	1200	10.0	95.5	35-65	15	14	165
TG9S080C16MP11	76	1600	11.5	95.5	35-65	15	14	155
TG9S080C22MP11	76	2200	17.0	95.5	35-65	20	12	155
TG9S100C16MP11	95	1600	11.5	95.5	35-65	15	14	165
TG9S100C20MP11	95	2000	17.0	95.5	35-65	20	12	155
TG9S120D16MP11	114	1600	11.5	95.5	40-70	15	14	170
TG9S120D20MP11	114	2000	17.0	95.5	35-65	20	12	160
TG9S130D20MP11	123.5	2000	17.0	95.5	45-75	20	12	165

Annual Fuel Utilization Efficiency (AFUE) numbers are determined in accordance with DOE Test procedures. Wire size and over current protection must comply with the National Electrical Code (NFPA-70-latest edition) and all local codes. The furnace shall be installed so that the electrical components are protected from water.

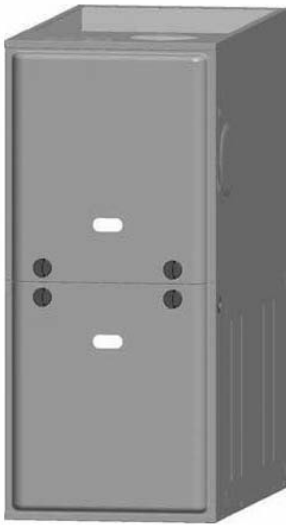
FRASER-JOHNSTON®

Heating ■ Air Conditioning

**GAS-FIRED RESIDENTIAL
SINGLE STAGE MULTI-POSITION
GAS FURNACES**

MODEL: TG8S

**NATURAL GAS
40 - 130 MBH INPUT**



DESCRIPTION

These compact units employ induced combustion, reliable hot surface ignition and high heat transfer aluminumized tubular heat exchangers. The units are factory shipped for installation in upflow or horizontal applications and may be converted for downflow applications.

These furnaces are designed for residential installation in a basement, closet, alcove, attic, recreation room or garage and are also ideal for commercial applications. All units are factory assembled, wired and tested to assure safe dependable and economical installation and operation.

These units are Category I listed and may be common vented with another gas appliance as allowed by the National Fuel Gas Code.

WARRANTY

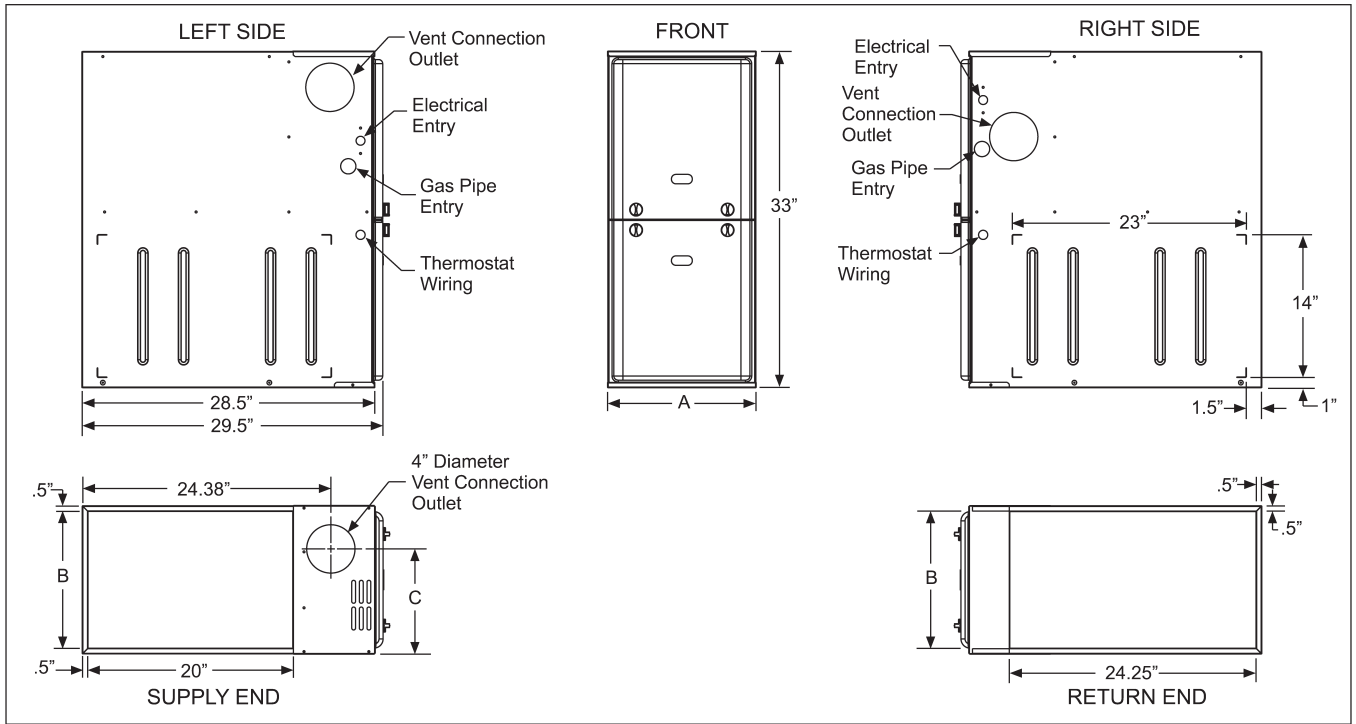
20-year limited warranty on the heat exchanger.

10-year heat exchanger warranty on commercial applications.

Extended 10-year limited parts warranty when product is registered online within 90 days of purchase for replacement or closing for new home construction.

FEATURES

- Easily applied in upflow, horizontal left or right, or downflow installation with minimal conversion necessary.
- Compact, easy to install, ideal height 33" tall cabinet.
- Blower-off delay for cooling SEER improvement.
- Easy access to controls to connect power/control wiring.
- Built-in, high level self diagnostics with fault code displays standard on integrated control module for reliable operation.
- Low unit amp requirement for easy replacement application.
- Single wire twinning or staging feature available.
- All models are convertible to use propane (LP) gas.
- Electronic Hot Surface Ignition saves fuel cost with increased dependability and reliability.
- 100% shut off main gas valve for extra safety.
- 4 speed, direct drive PSC motor.
- 24V, 40 VA control transformer and blower relay supplied for add-on cooling.
- Hi-tech tubular aluminumized steel primary heat exchanger.
- Timed on, adjustable off blower capability for maximum comfort.
- Blower door safety switch.
- Solid removable bottom panel allows easy conversion.
- Low NOx models have been designed to meet specific code requirements.
- Airflow leakage less than 1% of total airflow at ductblaster conditions.
- No knockouts to deal with, making installation easier.
- Movable duct connector flanges for application flexibility.
- Quiet inducer operation.
- Inducer rotates for easy conversion of venting options.
- Fully supported blower assembly for easy access and removal of blower.
- External air filters used for maximum flexibility in meeting customers IAQ needs.
- Venting applications - may be installed as a common vent with other gas-fired appliances or use a masonry chimney.
- 1/4 turn knobs provided for easy door removal



CABINET AND DUCT DIMENSIONS

Models	Nominal CFM	Cabinet Size	Cabinet Dimensions (Inches)			Approximate Operating Weights Lbs
			A	B	C	
TG8S040A08MP11	800	A	14 1/2	13 3/8	10.3	89
TG8S060A10MP11	1000	A	14 1/2	13 3/8	10.3	91
TG8S060A12MP11	1200	A	14 1/2	13 3/8	10.3	94
TG8S080B12MP11	1200	B	17 1/2	16 3/8	11.8	103
TG8S080C16MP11	1600	C	21	19 7/8	13.6	114
TG8S080C22MP11	2200	C	21	19 7/8	13.6	119
TG8S100B12MP11	1200	B	17 1/2	16 3/8	11.8	108
TG8S100C16MP11	1600	C	21	19 7/8	13.6	118
TG8S100C20MP11	2000	C	21	19 7/8	13.6	122
TG8S120C16MP11	1600	C	21	19 7/8	15.8	123
TG8S120C20MP11	2000	C	21	19 7/8	15.8	129
TG8S130D20MP11	2000	D	24 1/2	23 3/8	17.5	135

RATINGS & PHYSICAL / ELECTRICAL DATA

Models	Input MBH	Output MBH	AFUE	Air Temp. Rise °F	Max. Outlet Air Temp °F	Blower		Blower Size	Max Over-Current Protect	Total Unit Amps	Min. wire Size (awg) @ 75 ft one way
						HP	Amps				
TG8S040A08MP11	40	32	80.0	25-55	155	1/5	2.1	9 x 8	10	4.5	14
TG8S060A10MP11	60	48	80.0	25-55	155	1/3	3.8	9 x 8	10	6.0	14
TG8S060A12MP11	60	48	80.0	30-60	160	1/3	4.8	11 x 8	10	7.0	14
TG8S080B12MP11	80	64	80.0	35-65	165	1/3	4.8	11 x 8	10	7.5	14
TG8S080C16MP11	80	64	80.0	25-55	155	1/2	7.5	11 x 10	15	10.0	14
TG8S080C22MP11	80	64	80.0	25-55	155	1	14.5	11 x 11	20	16.0	12
TG8S100B12MP11	100	80	80.0	40-70	170	1/3	4.8	9 x 8	10	7.5	14
TG8S100C16MP11	100	80	80.0	35-65	165	1/2	7.5	11 x 10	15	10.0	14
TG8S100C20MP11	100	80	80.0	25-55	155	1	14.5	11 x 11	20	17.0	12
TG8S120C16MP11	120	96	80.0	40-70	170	1/2	7.5	11 x 10	15	10.0	14
TG8S120C20MP11	120	96	80.0	30-60	160	1	14.5	11 x 11	20	17.0	12
TG8S130D20MP11	130	104	80.0	35-65	165	1	14.5	11 x 11	20	17.0	12

Nominal external static pressure is 0.50" w.c. at furnace outlet ahead of cooling coils.
 Annual Fuel Utilization Efficiency (AFUE) numbers are determined in accordance with DOE Test procedures.
 Wire size and over current protection must comply with the National Electrical Code (NFPA-70-latest edition) and all local codes.



**95.5% STANDARD ECM SINGLE STAGE
MULTI-POSITION RESIDENTIAL
GAS FURNACES**

MODELS: RGF19*E

**NATURAL GAS
40 - 120 MBH INPUT**



DESCRIPTION

These compact units employ induced combustion, reliable hot surface ignition and high heat transfer aluminized tubular heat exchangers. The units are factory shipped for installation in upflow or horizontal applications and may be converted for downflow applications.

These furnaces are designed for residential installation in a basement, closet, alcove, attic, recreation room or garage and are also ideal for commercial applications. All units are factory assembled, wired and tested to assure safe dependable and economical installation and operation.

These units are Category IV listed and may be vented either through side wall or roof applications using approved plastic combustion air and vent piping.

WARRANTY

A 20-year limited warranty on heat exchangers in residential applications.

A 10-year warranty on the heat exchanger in commercial applications.

Standard 5-year limited Parts warranty.

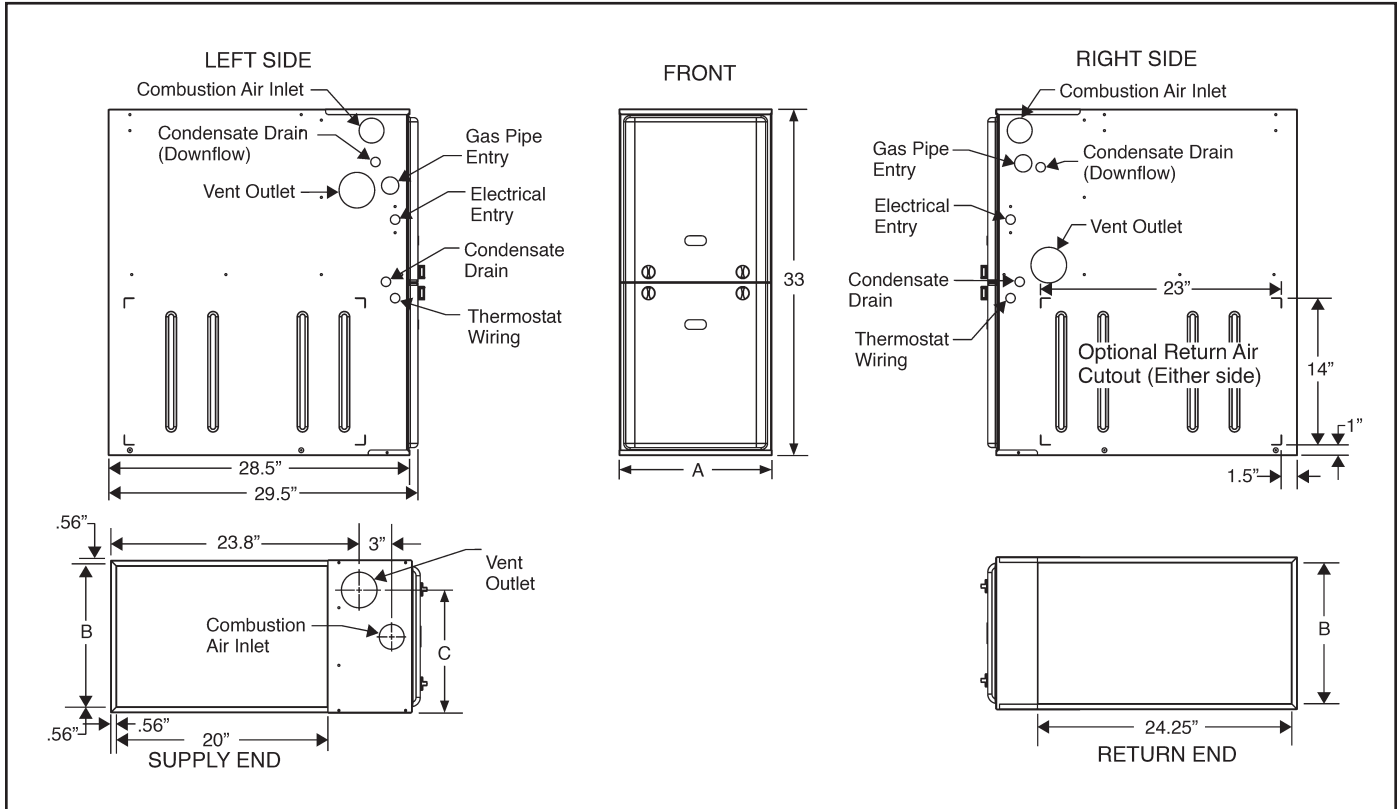
Extended lifetime heat exchanger and 10-year limited parts warranty when product is registered online within 90 days of purchase for replacement or closing for new home construction.

See Limited Warranty certificate in Users Information Manual for details.

FEATURES

- Easily applied in upflow, horizontal left or right, or downflow installation with minimal conversion necessary.
- Compact, easy to install, ideal height 33" tall cabinet.
- Blower-off delay for cooling SEER improvement.
- Easy access to controls to connect power/control wiring.
- Built-in, high level self diagnostics with fault code displays standard on integrated control module for reliable operation.
- Low unit amp requirement for easy replacement application.
- All models are convertible to use propane (LP) gas.
- Electronic Hot Surface Ignition saves fuel cost with increased dependability and reliability.
- 100% shut off main gas valve for extra safety.
- 5 speed, direct drive X13 style high efficiency DC motor.
- 24V, 40 VA control transformer and blower relay supplied for add-on cooling.
- Hi-tech tubular aluminized steel primary heat exchanger.
- Secondary heat exchanger made of corrosion resistant stainless steel materials.
- Timed on, adjustable off blower capability for maximum comfort.
- Blower door safety switch.
- Solid removable bottom panel allows easy conversion.
- Airflow leakage less than 1% of nominal airflow at ductblaster conditions.
- No knockouts to deal with, making installation easier.
- Movable duct connector flanges for application flexibility.
- Quiet inducer operation.
- Inducer rotates for easy conversion of venting options.
- Fully supported blower assembly for easy access and removal of blower.
- External air filters used for maximum flexibility in meeting customers IAQ needs.
- Protection included from air intake, exhaust vent, or condensate blockage.
- Patent pending self priming internal condensate trap design for easy installation.
- Venting applications - may be installed as either 2-pipe (sealed combustion) or single-pipe vent (using indoor combustion air).
- No special vent termination required.
- 1/4 turn knobs provided for easy door removal.
- High-efficiency blower motor for lower electrical power usage and improved A/C SEER ratings.
- Insulated blower compartment for terminal and acoustic performance.

Due to continuous product improvement, specifications are subject to change without notice.



CABINET AND DUCT DIMENSIONS

BTUH (kW) Input	Nominal CFM CFM (m3/min)	Cabinet Size	Cabinet Dimensions (Inches)			Approximate Operating Weights Lbs
			A	B	C	
RGF19060BE12MP11	1200	B	17-1/2	16-3/8	13-1/4	122
RGF19080BE12MP11	1200	B	17-1/2	16-3/8	14-3/4	126
RGF19080CE16MP11	1600	C	21	19-7/8	16-1/2	136
RGF19100CE16MP11	1600	C	21	19-7/8	18-1/4	142
RGF19100CE20MP11	2000	C	21	19-7/8	18-1/4	145
RGF19120DE20MP11	2000	D	24-1/2	23-3/8	21-3/4	156

RATINGS & PHYSICAL / ELECTRICAL DATA

BTUH (kW) Input	Output	Nominal Airflow	AFUE	Air Temp. Rise	Max. Outlet Air Temp	Blower		Blower Size	Max. Over-Current Protect	Total Unit Amps	Min. wire @ 75 ft one way
	MBH	CFM	%	°F	°F	HP	Amps				
RGF19060BE12MP11	57	1200	95.5	30-60	180	1/2	6.8	11x8	15	9.5	14
RGF19080BE12MP11	76	1200	95.5	40-70	170	1/2	6.8	11x8	15	9.5	14
RGF19080CE16MP11	76	1600	95.5	35-65	165	1/2	6.8	11x10	15	9.5	14
RGF19100CE16MP11	95	1600	95.5	40-70	170	1/2	6.8	11x10	15	9.5	14
RGF19100CE20MP11	95	2000	95.5	35-65	165	3/4	8.4	11x11	15	10.9	14
RGF19120DE20MP11	114	2000	95.5	45-75	175	3/4	8.4	11x11	15	10.9	14

Annual Fuel Utilization Efficiency (AFUE) numbers are determined in accordance with DOE Test procedures. Wire size and over current protection must comply with the National Electrical Code (NFPA-70-latest edition) and all local codes. The furnace shall be installed so that the electrical components are protected from water.



**80% STANDARD PSC SINGLE STAGE
MULTI-POSITION RESIDENTIAL
GAS FURNACES**

MODELS: RGF1L*P

**NATURAL GAS
40 - 130 MBH INPUT**



Due to continuous product improvement, specifications are subject to change without notice.

DESCRIPTION

These compact units employ induced combustion, reliable hot surface ignition and high heat transfer aluminized tubular heat exchangers. The units are factory shipped for installation in upflow or horizontal applications and may be converted for downflow applications.

These furnaces are designed for residential installation in a basement, closet, alcove, attic, recreation room or garage and are also ideal for commercial applications. All units are factory assembled, wired and tested to assure safe dependable and economical installation and operation.

These units are Category I listed and may be common vented with another gas appliance as allowed by the National Fuel Gas Code.

WARRANTY

20-year limited warranty on the heat exchanger.

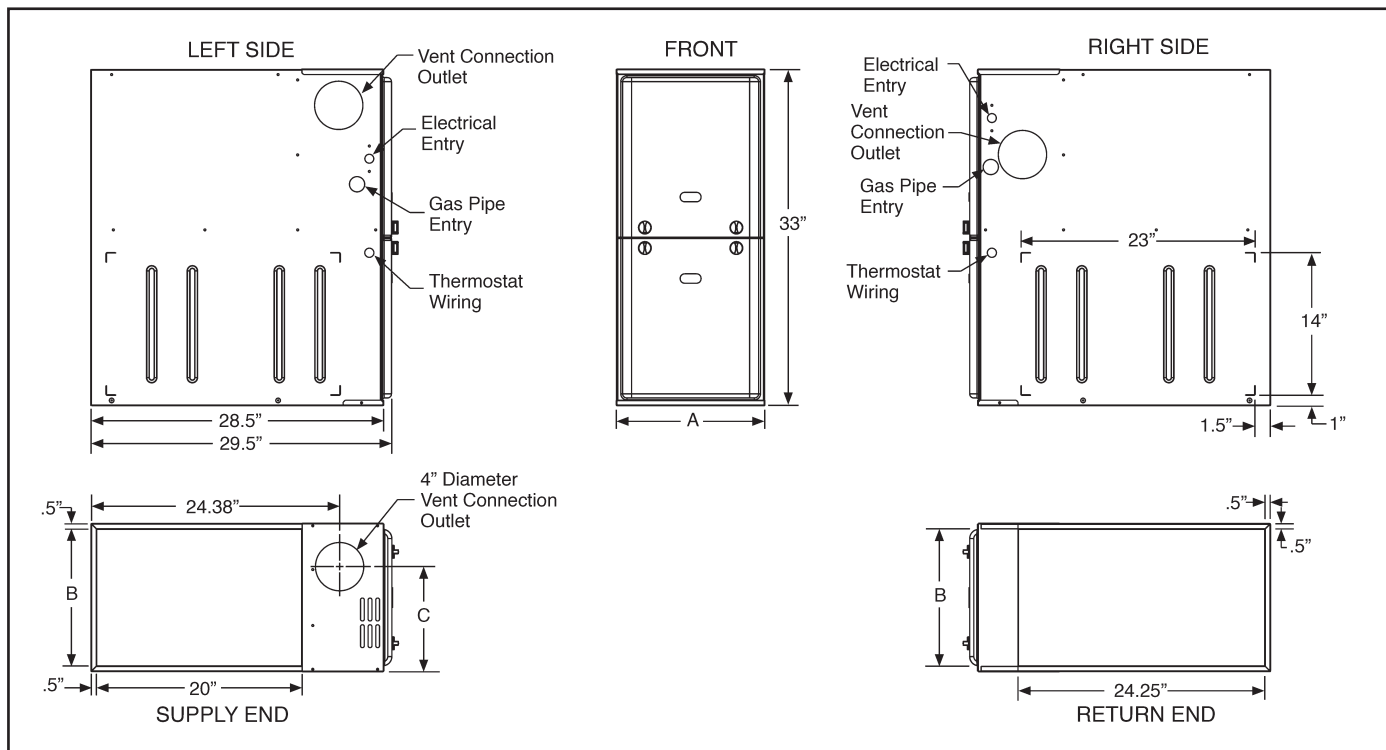
10-year heat exchanger warranty on commercial applications.

Standard 5-year limited Parts warranty.

Extended 10-year limited parts warranty when product is registered online within 90 days of purchase for replacement or closing for new home construction.

FEATURES

- Easily applied in upflow, horizontal left or right, or downflow installation with minimal conversion necessary.
- Compact, easy to install, ideal height 33" tall cabinet.
- Blower-off delay for cooling SEER improvement.
- Easy access to controls to connect power/control wiring.
- Built-in, high level self diagnostics with fault code displays standard on integrated control module for reliable operation.
- Low unit amp requirement for easy replacement application.
- Single wire twinning or staging feature available.
- All models are convertible to use propane (LP) gas.
- Electronic Hot Surface Ignition saves fuel cost with increased dependability and reliability.
- 100% shut off main gas valve for extra safety.
- 4 speed, direct drive PSC motor.
- 24V, 40 VA control transformer and blower relay supplied for add-on cooling.
- Hi-tech tubular aluminized steel primary heat exchanger.
- Timed on, adjustable off blower capability for maximum comfort.
- Blower door safety switch.
- Low NOx models have been designed to meet specific code requirements.
- Airflow leakage less than 1% of total airflow at ductblaster conditions.
- No knockouts to deal with, making installation easier.
- Movable duct connector flanges for application flexibility.
- Quiet inducer operation.
- Inducer rotates for easy conversion of venting options.
- Fully supported blower assembly for easy access and removal of blower.
- External air filters used for maximum flexibility in meeting customers IAQ needs.
- Venting applications - may be installed as a common vent with other gas-fired appliances or use a masonry chimney.
- 1/4 turn knobs provided for easy door removal.
- Insulated blower compartment for thermal and acoustic performance.



CABINET AND DUCT DIMENSIONS

Models	Nominal CFM (m ³ /min)	Cabinet Size	Cabinet Dimensions (Inches)			Approximate Operating Weights Lbs
			A	B	C	
RGF1L040AP08MP11	800	A	14 1/2	13 3/8	10.3	89
RGF1L060AP12MP11	1200	A	14 1/2	13 3/8	10.3	94
RGF1L080BP12MP11	1200	B	17 1/2	16 3/8	11.8	103
RGF1L080CP16MP11	1600	C	21	19 7/8	13.6	114
RGF1L100CP16MP11	1600	C	21	19 7/8	13.6	118
RGF1L100CP20MP11	2000	C	21	19 7/8	13.6	122
RGF1L120CP20MP11	2000	C	21	19 7/8	5.8	129

RATINGS & PHYSICAL / ELECTRICAL DATA

Models	Input	Output	AFUE	Air Temp. Rise	Max. Outlet Air Temp	Blower		Nominal Airflow	Blower Size	Max Over-Current Protect	Total Unit Amps	Min. wire Size (awg) @ 75 ft one way
	MBH	MBH		°F	°F	HP	Amps					
RGF1L040AP08MP11	40	32	80.0	25-55	155	1/5	2.1	800	9 x 8	10	4.5	14
RGF1L060AP12MP11	60	48	80.0	30-60	170	1/3	4.8	1200	11 x 8	10	7.0	14
RGF1L080BP12MP11	80	64	80.0	35-65	165	1/3	4.8	1200	11 x 8	10	7.5	14
RGF1L080CP16MP11	80	64	80.0	25-55	155	1/2	7.5	1600	11 x 10	15	10.0	14
RGF1L100CP16MP11	100	80	80.0	35-65	165	1/2	7.5	1600	11 x 10	15	10.0	14
RGF1L100CP20MP11	100	80	80.0	25-55	155	1	14.5	2000	11 x 11	20	17.0	12
RGF1L120CP20MP11	120	96	80.0	30-60	160	1	14.5	2000	11 x 11	20	17.0	12

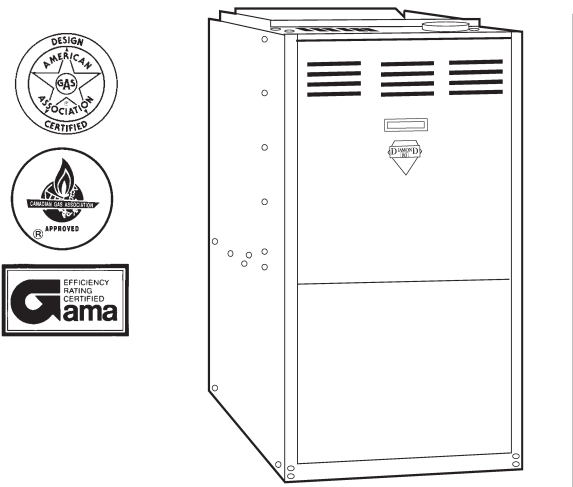
Nominal external static pressure is 0.50" w.c. at furnace outlet ahead of cooling coils.
 Annual Fuel Utilization Efficiency (AFUE) numbers are determined in accordance with DOE Test procedures.
 Wire size and over current protection must comply with the National Electrical Code (NFPA-70-latest edition) and all local codes.

FRASER-JOHNSTON®

Heating ■ Air Conditioning

GAS-FIRED FURNACES

**COMMERCIAL BELT DRIVE
MID-EFFICIENCY MULTI-POSITION,
(UPFLOW & HORIZONTAL)
130 MBH OUTPUT
78 AFUE**



**MODEL GY8S160E30UH21
UPFLOW & HORIZONTAL**

FEATURES

- Easily applied in upflow, horizontal left or horizontal right installation with no conversion necessary.
- Electronic hot surface ignition with high reliability and dependability.
- 100% shut off main gas valve for added safety.
- Rollout safety control.
- Large belt drive blower for high CFM and static capability.
- 1-1/2 HP ball bearing motor.
- "Diamond Tough™" hot surface igniter.
- 409 stainless steel heat exchanger for long term durability.
- High quality inducer motor for quiet operation.
- Standard terminals for controlling humidifiers and EAC's or other commercial application requirements.
- 40 VA control transformer fuse protected.
- Easy to connect power and control wiring.
- Efficiency ratings of 78 AFUE attained by using tubular heat exchangers.
- Cooling relay supplied for easy installation of add-on cooling.
- Adjustable fan-off settings to eliminate "cold-blow".
- Compact 40-in height allows installation in small space confines.
- Model is propane convertible.
- Attractive baked enamel finish for durability.

WARRANTY

20-year limited warranty on the heat exchanger.

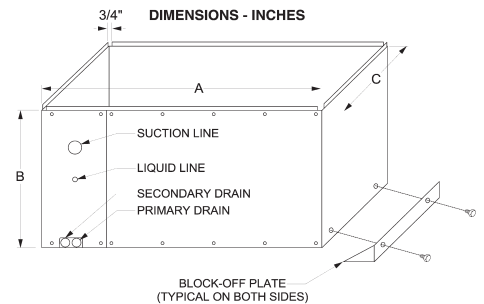
10-year heat exchanger warranty on commercial applications.

1-year limited parts warranty.

7-1/2 Ton Add-On Coil

UNIT MODEL G2FD	DIMENSIONS			REFRIGERANT CONNECTION	
				LINE SIZE	
	A	B	C	LIQUID	VAPOR
G2FD090535	32 1/2	24 1/2	21 1/2	3/8"	7/8"

NOTE: G2FD090535 must only be used in an upflow application.

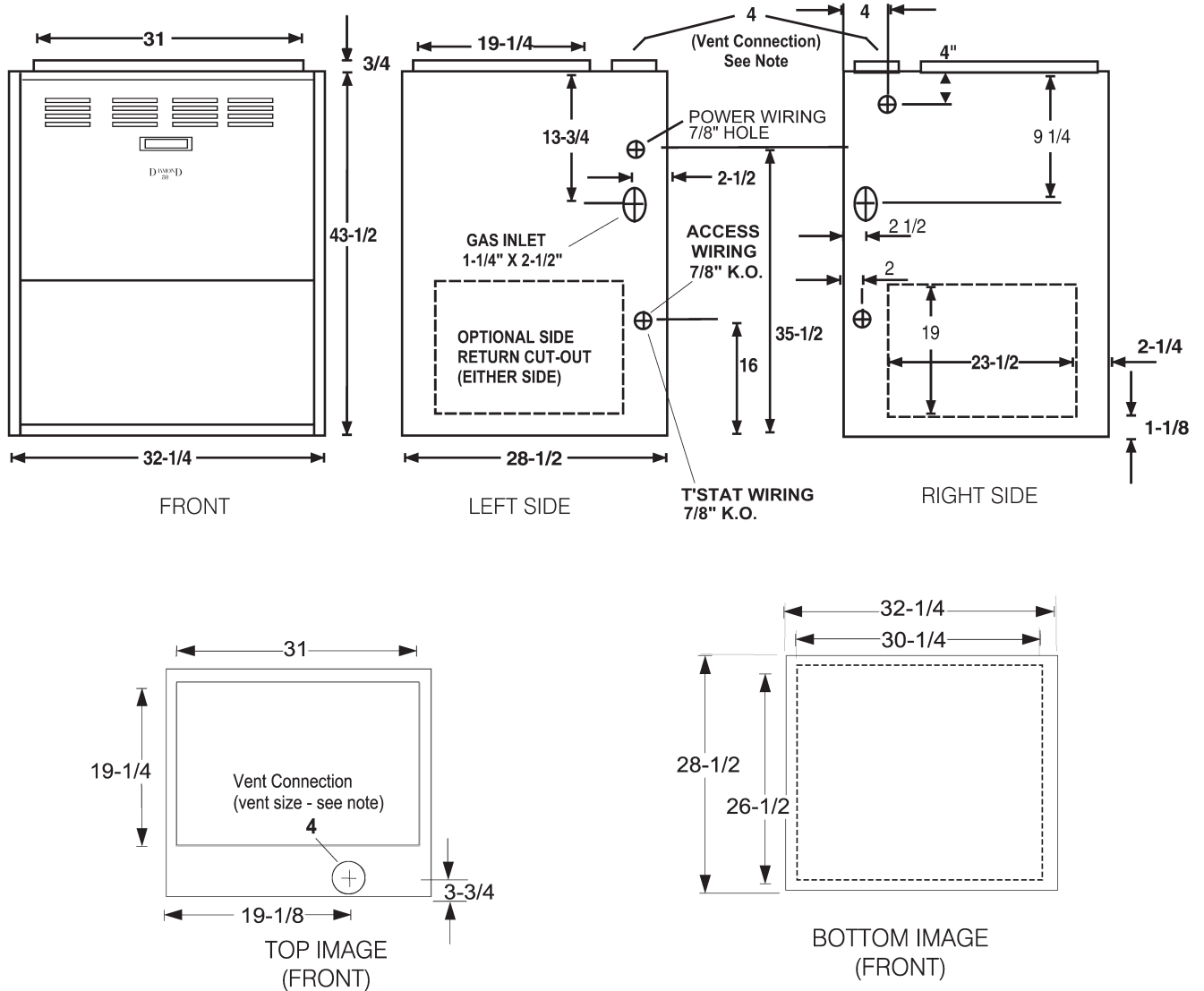


UNIT CLEARANCES TO COMBUSTIBLES (All surfaces identified with the unit in a vertical position)

APPLICATION	TOP	FRONT	REAR	LEFT SIDE	RIGHT SIDE	FLUE	FLOOR/ BOTTOM	CLOSET	ALCOVE	ATTIC	LINE CONTACT
UPFLOW	1	6	0	0	0	6	COMBUSTIBLE	YES	YES	YES	NO
UPFLOW B-VENT	1	3	0	0	0	1	COMBUSTIBLE	YES	YES	YES	NO
HORIZONTAL	1	6	0	0	0	6	COMBUSTIBLE	NO	YES	YES	YES
HORIZ. B-VENT	1	3	0	0	0	1	COMBUSTIBLE	NO	YES	YES	YES

NOTE: Line contact only permitted between lines formed by the intersection of the rear panel and side panel (top in horizontal position) of the furnace jacket and building joists, studs or framing.

DIMENSIONS



NOTE: Vent must be increased to 5" using adapter provided.

RATINGS & PHYSICAL DATA

Model	Input MBH	Output MBH	AFUE	Air Temp Rise °F	Max. Outlet Temp. °F	Blower		Total Unit Amps @230 vac	Max. Over-Current Protect @230 vac	Min. Wire Size (AWG) @75 Ft. One Way @230 vac	Oper. Wgt. (Lbs)
						HP	Size				
GY8S160E30UH21	160	130	78	25 - 55	150	1-1/2	12 x 15	10.5	15	12	248

FILTER SIZE/ADD-ON COOLING

MODEL NUMBER	ADD-ON COOLING		APPROX. OPER. WEIGHT
	TONS	CFM @ .75 ESP ¹	
GY8S160E30UH21	5, 6, 7-1/2	3315	248

¹ESP (External Static Pressure) .75" W.C. is at furnace outlet ahead of cooling coil.

POWER HUMIDIFIERS



MODEL 1137

Flow-through humidifier that's ideal for most homes. No by-pass required. Installs on vertical warm air supply plenum.

Unit size: 16" wide x 14" high x 10" deep
 Plenum opening: 15" wide x 9-1/2" high
 Bypass duct: N/A

1137 Series - 21.3 GPD Capacity

Drain type humidifier with fan for installation on warm air plenum. Built-in isolation relay provides 24V. secondary voltage for control of fan motor and solenoid valve by a wall/duct humidistat included. 120V power cord, 15' of drain hose, 10' of wire and saddle valve included. (Copper tubing not included.)

Model 1137
 Model 1137R - Recirculating, no household drain required. Comes with 975 recirculating pump.

REPLACEMENT PARTS 1137	
PART #	DESCRIPTION
1099-9	Thumb Nut
990-13	Evaporator Pad
1137-17	Solenoid Valve Assy.
1137-9	Fan Blade
GA4328	Relay Assembly
1137-8	Fan Motor
1137-3	Drain Pan
1137-21	Pump (1137R Only)



MODEL 1042LH

Flow-through humidifier that's ideal for most homes. Installs on vertical warm air supply or cold air return plenum.

Unit size: 15" wide x 11-1/2" high x 9" deep
 Plenum opening: 10-1/4" wide x 9-1/2" high
 Bypass duct: 6" diameter (collar supplied)

1042 Series - 19.2 GPD Capacity

Drain type, by-pass humidifier with new styling. New patented water distribution system. Humidity control selector/shutoff damper. 6" collar, 15 ft. of drain hose, saddle valve and brass fittings. (copper supply tubing and 6" by-pass pipe not included.) Replaces the Model 1040 fitting the same plenum opening and mounting holes as the original 1040.

Model #1042 - 120 volt
 Model #1042L - 24 volt
 Model 1042LH - Same as 1042L plus H-86 wall/duct humidistat.

REPLACEMENT PARTS FOR 1042 SERIES	
PART #	DESCRIPTION
990-13	Evaporator Pad
975-33	Motor
975-45	Pump, Motor & Lid Assy.
1137-3	Drain Pan
975-10	Float Valve Assy.
990-52	Solenoid 115v
990-53	Solenoid 24v
975-1	Seat Valve
727-58	Transformer 24v
990-37-75	Orifice with Strainer

POWER HUMIDIFIERS



MODEL 1099LH

Highest capacity flow-through humidifier for large homes. Installs on vertical warm air supply or cold air return plenum.

Unit size: 16" wide x 16" high x 11" deep
 Plenum opening: 13-1/4" wide x 9-1/4" high
 Bypass duct: 7" diameter (collar supplied)

1099 Series - 23.1 GPD Capacity

Drain type humidifier, fiber glass reinforced cabinet, complete with 115V solenoid valve, 7 in. stub collar, 15 ft. of drain hose, saddle valve and brass fittings. (Copper tubing and 7 in. pipe not included.)

Model 1099

Model 1099LH - Same as 1099 but with 24V solenoid valve and transformer allowing 24V control circuit plus H-86 wall/duct humidistat.

REPLACEMENT PARTS SERIES 1099	
PART #	DESCRIPTION
1099-20	Evaporator Pad
1099-41	Solenoid 115v
1099-42	Solenoid 24v
975-1	Seat Valve
975-10	Float Valve Assy.
975-33	Motor
975-45	Pump, Motor & Lid Assy.
727-58	Transformer, 24v



Model 570

Model Elite 570 is a Bypass Design Humidifier incorporating an integral humidity control damper. The hot air from your furnace is bypassed through a Vapor Pad® where moisture is evaporated and absorbed into the airflow of your heating system. This economical design will provide comfort as it humidifies your home. The 570 is an option designed for smaller size homes.

MODEL 570 - 12.0 GPD Capacity

Unit size: 11-7/8" wide x 13-3/8" high x 9-1/2" deep
 Plenum opening: 8-3/4" wide x 9-1/2" high
 Bypass duct: 6" diameter

REPLACEMENT PARTS MODEL 65	
PART #	DESCRIPTION
GA10	Evaporator Pad
GA4040	Solenoid 24v

POWER HUMIDIFIERS



Model 900XM Elite Series Humidifier

FEATURES

- Manual Humidistat, a contemporary design and solid construction, the MHX3 gives you the ability to control your humidity comfort level.
- Bypass humidifier mounts easily on the warm or return plenum and delivers 17 GPD.
- Evaporator pad replacement number GA19.
- A portion of the heated air from the furnace passes through a water-soaked pad where it absorbs additional moisture and then returns for distribution throughout your home.
- Water is metered into a patented kinetic trough and dispersed uniformly across the pad. Un-evaporated water drains from the bottom of the unit to eliminate mineral build-up.



Humidity requirements in GPD based on house size and type of construction (from ARI Guideline F)

Type of Construction	Size of house (sq. ft.)*					
	500	1000	1500	2000	2500	3000
Tight	2.1	4.2	6.4	8.5	10.6	12.7
Average	3.3	6.5	9.8	13.1	16.3	19.6
Loose	4.6	9.2	13.8	18.4	23.0	27.6

*Based on 8ft. ceiling height

Humidity based on a 70°F-35% relative humidity indoor conditions using ARI Guideline F Humidity Load Determination Method.

Model No.	GPD*	Loose	Average	Tight
900	17	1782	2523	3904

*NOTE: Figures are based on an 8ft. ceiling height. GPD shown is a 120° plenum temperature. Square footage may be adjusted for other plenum temperatures.

SPECIFICATIONS

Unit Size: 12" wide x 16-1/2" high x 10" deep
Plenum Opening: 8-3/4" wide x 12" high
Bypass Duct: 6" diameter

Model 1000XM Elite Series Humidifier

FEATURES

- Manual Humidistat, a contemporary design and solid construction, the MHX3 gives you the ability to control your humidity comfort level.
- Fan-powered unit mounts easily on the warm air plenum and delivers 18 GPD.
- Evaporator pad replacement number GA19.
- A portion of the heated air from the furnace passes through a water-soaked pad where it absorbs additional moisture and then returns for distribution throughout your home.
- Water is metered into a patented kinetic trough and dispersed uniformly across the pad. Un-evaporated water drains from the bottom of the unit to eliminate mineral build-up.



Humidity requirements in GPD based on house size and type of construction (from ARI Guideline F)

Type of Construction	Size of house (sq. ft.)*					
	500	1000	1500	2000	2500	3000
Tight	2.1	4.2	6.4	8.5	10.6	12.7
Average	3.3	6.5	9.8	13.1	16.3	19.6
Loose	4.6	9.2	13.8	18.4	23.0	27.6

*Based on 8ft. ceiling height

Humidity based on a 70°F-35% relative humidity indoor conditions using ARI Guideline F Humidity Load Determination Method.

Model No.	GPD*	Loose	Average	Tight
1000	18	1924	2723	4214

*NOTE: Figures are based on an 8ft. ceiling height. GPD shown is a 120° plenum temperature. Square footage may be adjusted for other plenum temperatures.

SPECIFICATIONS

Unit Size: 16" wide x 16-1/2" high x 10" deep
Plenum Opening: 14" wide x 12" high

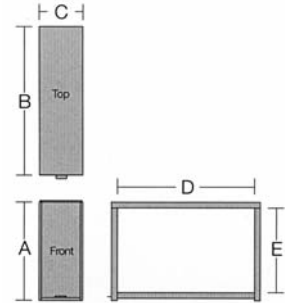
AIR CLEANERS

Progressive Media Air Cleaners

Straight-through Design

- The choice for optimizing *Indoor Air Quality*
- Top performing Ultravation® Progressive MERV 11 Media
- Superior dust spot ratings:
51 % initial / 56% average
- UltraStrand™ media technology:
MERV 11 efficiency—matches older technology MERV 8 initial resistance!
- 10-year cabinet warranty

Ultravation® Progressive Media Air Cleaners with UltraStrand™ media technology remove particulates as small as .3 microns! They have better capture capability yet match MERV 8 pressure drop characteristics.



Model	Finish	Cabinet Dimensions A x B x C	Duct Opening D x E	Filter size
90-006	Light beige, powder coat	16 3/4" x 25 1/4" x 7 3/8"	23 1/4" x 14 3/8"	16" x 25" x 5"
90-007	Light beige, powder coat	20 3/4" x 25 1/4" x 7 3/8"	23 1/4" x 18 3/8"	20" x 25" x 5"

Right Angle Design

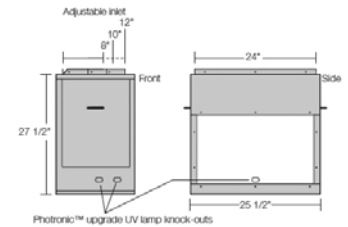
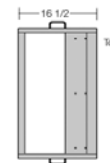
The versatile right angle design cabinet with adjustable inlet saves space and simplifies installation (see illustration). The cabinet opens on either end to fit any installation configuration.

Rugged and Efficient Right Angle Design

- Right angle cabinet simplifies installation requiring less duct metal and less labor.



Cabinet Layout



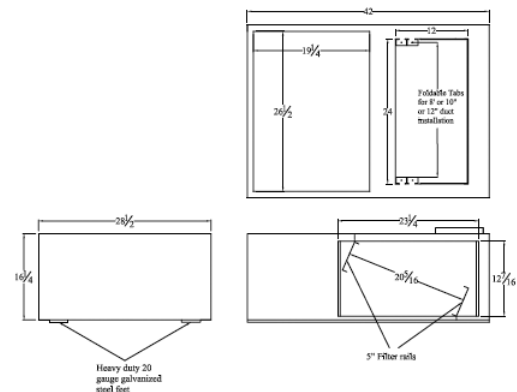
Model	Finish	Cabinet Dimensions	Outlet size (furnace A/C side)	Inlet size	Filter size
90-064	Light beige, powder coat	27 1/2" x 16 1/2" x 25 1/2"	23 1/8" x 13 9/16"	Adjustable	20" x 25" x 5"

Support Box Design

The support box design cabinet with adjustable inlet saves space and simplifies installation (see illustration). The cabinet is reversible to fit any installation configuration.

Rugged and Efficient Design

- Cabinet simplifies installation requiring less duct metal and less labor.
- Two Sizes—compliments most air handler / furnace designs
- Fully insulated (available without insulation)
- Adjustable inlet and outlet
- Reversible for installation flexibility



Model	Finish	Cabinet Dimensions	Outlet size (furnace side)	Inlet size	Filter size
90-035	Light beige, powder coat	42" x 28 1/2" x 16 1/4"	26 1/2" x 19 1/4"	Adjustable	20" x 25" x 5"

UV AIR PURIFIERS

Ultravation®
Advanced technology for indoor air quality

Ultramax™ integrates UV lamps, power supply and microprocessor control into a single, balanced UV system that is designed for state of the art performance in HVAC mold treatment and airborne microorganism reduction.

UltraMAX
ULTRAVIOLET™
Whole House UV Air Treatment System

- Ultramax™ is the only microprocessor controlled UV air disinfection system.
- The ESP II™ integrated power supply monitors and controls the lamps, optimizing UV performance at all times. Taking cues from the microprocessor, it senses when to send more or less power to the lamps.
- ESP II auto-senses line voltage 120-277VAC 50/60Hz.
- The UVLampMonitor displays lamp status and reminds the homeowner when lamp changes are needed.
- TWO-YEAR lamp life.
- Ultravation® proprietary easy-plug-in lamp system prevents accidental homeowner exposure to UV for added safety.
- Ultramax™ Remote UV lamp models use Ultravation's T3™ (patented) design that produces up to 40% more UV than competing models with safety interlock system.
- Ultramax™ integrated or fixed UV lamp models use Compact-Twin "U" shaped lamps that effectively double the lamp's length—for substantially more output than any competing lamp.
- All Ultramax™ UV lamps use Philips Sterilamp® low mercury content UV lamp technology and are the most environmentally friendly UV lamp available. Philips lamps use less than 5mg of mercury.

17" FIXED LAMP

Features:

- Autosensing power supply – Works on any voltage from 115-240VAC
- Single or dual lamp configurations
- Compact design
- Electronic power supply
- T3 lamps deliver 50% more UV
- On/Off power switch
- No need to remove unit to change lamps
- 1 year UVC lamp warranty
- 10 year equipment warranty



UMX 2036

17" REMOTE LAMP

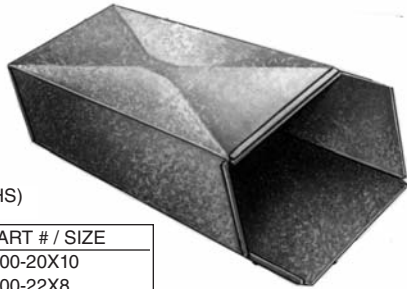
Features:

- Autosensing power supply – Works on any voltage from 115-240VAC
- Single or dual lamp configurations
- 6 Ft. lamp lead cords(s)
- Compact design
- Electronic power supply
- T3 lamps deliver 50% more UV
- On/Off power switch
- No need to remove unit to change lamps
- 1 year UVC lamp warranty
- 10 year equipment warranty



UMX 1902

TRUNK DUCT



TRUNK DUCT (5' LENGTHS)

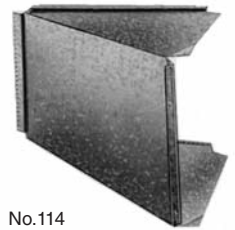
PART # / SIZE	PART # / SIZE
100-6X8	100-20X10
100-8X8	100-22X8
100-10X8	100-24X8
100-12X8	100-30X8
100-14X8	100-24X10
100-16X8	100-24X12
100-18X8	
100-20X8	

*Available in 8' lengths at some branch locations.

TRUNK REDUCERS



No.113
Reducer - Increaser

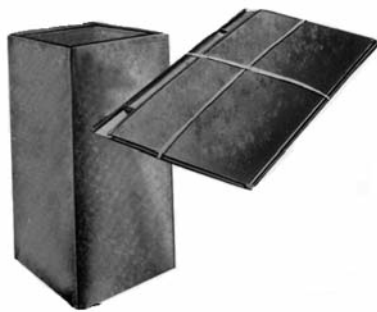


No.114
Duct Adapter

PART # / SIZE
113-10X8-8X8
113-12X8-8X8
113-12X8-10X8
113-14X8-10X8
113-14X8-12X8
113-16X8-12X8
113-16X8-14X8
113-18X8-10X8
113-18X8-14X8
113-18X8-16X8
113-20X8-14X8
113-20X8-16X8
113-20X8-18X8
113-24X8-18X8
113-24X8-20X8
113-24X10-18X8
113-24X10-24X8
113-24X12-24X8

PART # / SIZE
114-2
114-4
114-6
114-8

PLENUM CHAMBERS (Custom Made)



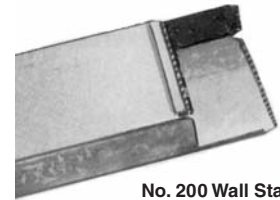
No. 12
Custom Made
Plenum Chamber
Shipped Knocked
Down & Strapped

PLENUM CHAMBERS
CUSTOM MADE FOR LUXAIRE FURNACES

PART # / SIZE
20-1/8x13-1/2x36
20-1/8x13-1/2x60
20-1/8x16-1/2x36
20-1/8x16-1/2x60
20-1/8x20x36
20-1/8x20x60
20-1/8x21-1/2x36
20-1/8x21-1/2x60

PART # / SIZE
21x13-1/2x36
21x13-1/2x60
21x16-1/2x36
21x16-1/2x60
21x20x36
21x20x60

WALL STACK



No. 200 Wall Stack
Button Lick - 2 piece
Wall Stack - 24"
Wall Stack - 60"
Wall Stack - 100"

PART # / SIZE
200-2 x 3-1/4 x 10
200-2 x 3-1/4 x 12
200-2 x 3-1/4 x 14
200-5 x 3-1/4 x 10
200-5 x 3-1/4 x 12
200-5 x 3-1/4 x 14
200-8 x 3-1/4 x 10
200-8 x 3-1/4 x 12
200-8 x 3-1/4 x 14

ADJUSTABLE PLENUMS

*To Install Adjustable Plenum:

- 1 - Cut raw edges of side panel to desired width and height sizes.
- 2 - Trim top to 1/8" Less than Plenum width and depth dimensions.
- 3 - Assemble 3 sides, slide top into side panel pockets, then position fourth side.

Parts No. 12AT and 12AS may be ordered separately.



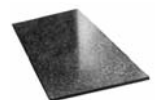
PLENUM SIDE

PART # / SIZE
12AS-15X34
12AS-18X34
12AS-18X46
12AS-21X34
12AS-21X46
12AS-24X34
12AS-24X46
12AS-30X34
12AS-30X46

PLENUM TOP

PART # / SIZE
12AT-14X14
12AT-15X15
12AT-18X18
12AT-21X21
12AT-24X24
12AT-30X30

JOIST PANNING



NO. 90 - 29" LONG

PART #	SIZE
90XX	33" WIDE
90-1/2	16" WIDE

DUCT FITTINGS

STACK ELBOWS

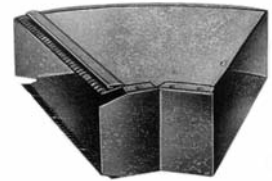
No. 290 Horizontal
90° Elbow (Longway)



PART #
290-3-1/4 x 10
290-3-1/4 x 12
290-3-1/4 x 14

STACK ANGLES

No. 209 Horizontal
45° Angle (Longway)



PART #
209-3-1/4 x 10
209-3-1/4 x 12
209-3-1/4 x 14

No. 216 Vertical
90° Elbow (Shortway)



PART #
216-3-1/4 x 10
216-3-1/4 x 12
216-3-1/4 x 14

No. 206 Vertical
45° Angle (Shortway)



PART #
206-3-1/4 x 10
206-3-1/4 x 12
206-3-1/4 x 14

COLD AIR DROPS



- No. CD100**
Cold Air Drop Package
- 1 – Starting Collar
 - 2 – Joins Duct
32" Long
 - 1 – Elbow with
Built-In Filter Rack

PART #
CD100-14X20
CD100-14X25
CD100-16X20
CD100-16X25

ELBOW ONLY

PART #
101-16X20
101-16X25

FILTER RACK

PART #
FR16X20X1
FR16X25X1
FR20X25X1

*CD100-16X20 DUCT SIZE IS 20X10.
CD100-16X25 DUCT SIZE IS 25X10.

END CAPS

No. 112 End Cap



PART # / SIZE
112-6X8
112-8X8
112-10X8
112-12X8
112-14X8
112-16X8
112-18X8
112-20X8
112-20X10
112-22X8
112-24X8
112-24X10
112-25X10
112-24X12
112-30X8

No. 212 End Cap



PART #
212-3-1/4 x 10
212-3-1/4 x 12
212-3-1/4 x 14

DUCT FITTINGS

STARTING COLLARS

No.111
Straight Takeoff Collar



PART # / SIZE
111-6X8
111-8X8
111-10X8
111-12X8
111-14X8
111-16X8
111-18X8
111-20X8
111-20X10
111-22X8
111-22X10
111-24X8
111-24X10
111-24X12
111-30X8

No. 211
Take-off Collar



PART # / SIZE
211- 3-1/4 x 10
211- 3-1/4 x 12
211- 3-1/4 x 14

No.110
Offset Takeoff Collar – 2" Rise – Plenum End is 2" greater in depth than trunk size



PART # / SIZE
110-8X8
110-10X8
110-12X8
110-14X8
110-16X8
110-18X8
110-20X8
110-22X8
110-24X8
110-24X10
110-24X12
110-30X8

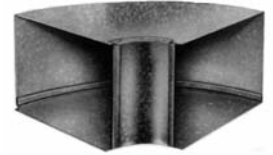
No. 115C
Transition Takeoff Collar - Center Line



PART # / SIZE	INLET SIZE
115C-1/2-14x8	10 X 12
115C-1/2-16x8	10 X 13
115C-1/2-18x8	10 X 15
115C-1/2-20X8	10 X 16
115C-1/2-24X8	10 X 20

ELBOWS AND ANGLES

No. 190
90° Horizontal Elbow (Longway)



PART # / SIZE	PART # / SIZE
190S-6X8	190S-20X8
190S-8X8	190S-22X8
190S-10X8	190S-24X8
190S-12X8	190S-30X8
190S-14X8	190S-20X10
190S-16X8	190S-24X10
190S-18X8	190S-24X12

"S" Designates Square Throat

No. 109
45° Horizontal Angle (Longway)



PART # / SIZE	PART # / SIZE
109-6X8	109-20X8
109-8X8	109-22X8
109-10X8	109-24X8
109-12X8	109-30X8
109-14X8	109-24X10
109-16X8	109-24X12
109-18X8	

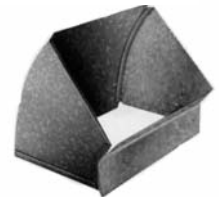
No. 116
90° Vertical Elbow (Shortway)



PART # / SIZE	PART # / SIZE
116S-6X8	116S-20X8
116S-8X8	116S-22X8
116S-10X8	116S-24X8
116S-12X8	116S-30X8
116S-14X8	116S-20X10
116S-16x8	116S-24X10
116S-18X8	116S-24X12

"S" Designates Square Throat

No. 106
45° Vertical Angle (Shortway)



PART # / SIZE	PART # / SIZE
106-6X8	106-20X8
106-8X8	106-22X8
106-10X8	106-24X8
106-12X8	106-30X8
106-14X8	106-20X10
106-16X8	106-24X10
106-18X8	106-24X12

DUCT FITTINGS

HANDY LOCK FURNACE PIPE



Button Lock-120" Joint. Push Edges Together to Lock. Assembly is an Easy One-Man Job Without Use of Tools.

Handy Lock-60" Joint. Push Edges Together to Lock ... No Tools.

Handy Lock-24" Joint. Edges Lock Together Without Use of Tools.

SPIRAL DUCT 10' LENGTHS

PART #	SIZE	GAUGE
LE330-2	3"X2'	30
LE430-2	4"X2'	
LE530-2	5"X2'	
LE630-2	6"X2'	
LE730-2	7"X2'	30
LE830-2	8"X2'	
LE330-5	3"X5'	30
LE430-5	4"X5'	
LE530-5	5"X5'	30
LE730-5	7"X5'	
LE630-5	6"X5'	
LE630-10	6"X10'	
LE830-5	8"X5'	

PART #	GAUGE
6S	26
8S	26
10S	26
12S	26
14S	26
16S	24
18S	24
20S	24

SPIRAL DUCT COUPLINGS

PART #
6C
8C
10C
12C
14C
16C
18C
20C

PART #	SIZE	GAUGE
LE328-2	3"X2'	28
LE928-2	9"X2'	
LE1028-2	10"X2'	
LE1228-2	12"X2'	
LE928-5	9"X5'	
LE1028-5	10"X5'	
LE1228-5	12"X5'	

PART #	SIZE	GAUGE
LE426-2	4"X2'	26
LE526-2	5"X2'	
LE626-2	6"X2'	
LE726-2	7"X2'	
LE826-2	8"X2'	
LE926-2	9"X2'	
LE1026-2	10"X2'	
LE1226-2	12"X2'	
LE1226-5	12"X5'	
LE1426-5	14"X5'	

PART #	SIZE	GAUGE
LE1224-2	12"X2'	24
LE1424-2	14"X2'	
LE1624-2	16"X2'	
LE2024-2	20"X2'	
LE2224-2	22"X2'	
LE2424-2	24"X2'	

ROUND ELBOWS

GALVANIZED PIPE 90° ELBOW



PART #	SIZE	GAUGE
EL430	4"	30
EL530	5"	
EL630	6"	
EL730	7"	
EL830	8"	

PART #	SIZE	GAUGE
EL328	3"	28"
EL928	9"	
EL1028	10"	
EL1228	12"	

PART #	SIZE	GAUGE
EL426	4"	26
EL526	5"	
EL626	6"	
EL726	7"	
EL826	8"	
EL926	9"	

PART #	SIZE	GAUGE
EL1024	10"	24
EL1224	12"	
EL1424	14"	
EL1624	16"	
EL1824	18"	
EL2024	20"	
EL2224	22"	
EL2424	24"	

TAKEOFFS

No. EP75
Round to Round
Adjustable
Takeoff



PART #	SIZE
EP75-5	5"
EP75-6	6"
EP75-7	7"
EP75-8	8"

No. EP5
Top Takeoff
(No Rise)



PART #	SIZE
EP5-6	6"
EP5-7	7"
EP5-8	8"

No. EP200
Double Top
Takeoff



PART #	SIZE
EP200-6	6"

No. EP137
Adjustable
Takeoff
1-1/2" Rise



PART #	SIZE
EP137-5	5"
EP137-6	6"
EP137-7	7"
EP137-8	8"

DUCT FITTINGS

STACK BOOTS

No.13
90° Elbow
Stack Boot



NO.13 90° ELBOW STACK

PART # / SIZE
13 3-1/4 x 10 x 4
13 3-1/4 x 10 x 6
13 3-1/4 x 10 x 7
13 3-1/4 x 12 x 6
13 3-1/4 x 12 x 7
13 3-1/4 x 14 x 6
13 3-1/4 x 14 x 7

No. 5
Straight Back
Stack Boot



NO. 5 STRAIGHT BACK

PART # / SIZE
5 3-1/4 x 10 x 6
5 3-1/4 x 10 x 7
5 3-1/4 x 12 x 6
5 3-1/4 x 12 x 7
5 3-1/4 x 14 x 6
5 3-1/4 x 14 x 7

No. 17
Center End
Stack Boot

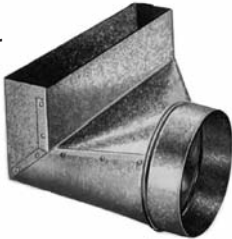


NO. 17 CENTER END

PART # / SIZE
17 3-1/4 x 10 x 4
17 3-1/4 x 10 x 6
17 3-1/4 x 10 x 7
17 3-1/4 x 12 x 6
17 3-1/4 x 12 x 7
17 3-1/4 x 14 x 6
17 3-1/4 x 14 x 7

REGISTER BOOTS

No. P13
90° Register
Boot



NO. P13 90° ELBOW

PART # / SIZE
P13 2-1/4 x 10 x 6
P13 2-1/4 x 12 x 6
P13 2-1/4 x 14 x 6
P13 4 x 10 x 5
P13 4 x 10 x 6
P13 4 x 10 x 7
P13 4 x 12 x 6
P13 4 x 12 x 7
P13 4 x 14 x 6
P13 4 x 14 x 7
P13 4 x 14 x 8
P13 6 x 10 x 5
P13 6 x 10 x 6
P13 6 x 10 x 7
P13 6 x 12 x 6
P13 6 x 12 x 7
P13 6 x 12 x 8
P13 6 x 14 x 6
P13 6 x 14 x 7
P13 6 x 14 x 8

No. P5
Straight Back
Register Boot



NO. P5 STRAIGHT BACK

PART # / SIZE
P5 2-1/4 x 10 x 6
P5 2-1/4 x 12 x 6
P5 2-1/4 x 14 x 6
P5 4 x 10 x 5
P5 4 x 10 x 6
P5 4 x 10 x 7
P5 4 x 12 x 6
P5 4 x 12 x 7
P5 4 x 12 x 8
P5 4 x 14 x 6
P5 4 x 14 x 7
P5 4 x 14 x 8
P5 6 x 10 x 6
P5 6 x 10 x 7
P5 6 x 12 x 6
P5 6 x 12 x 7
P5 6 x 12 x 8
P5 6 x 14 x 6
P5 6 x 14 x 7
P5 6 x 14 x 8

No. P17
Center End
Register Boot



NO. P17 CENTER END

PART # / SIZE
P17 2-1/4 x 10 x 6
P17 2-1/4 x 12 x 6
P17 2-1/4 x 14 x 6
P17 4 x 10 x 5
P17 4 x 10 x 6
P17 4 x 10 x 7
P17 4 x 12 x 6
P17 4 x 12 x 7
P17 4 x 14 x 6
P17 4 x 14 x 7
P17 4 x 14 x 8
P17 6 x 10 x 6
P17 6 x 10 x 7
P17 6 x 12 x 6
P17 6 x 12 x 7
P17 6 x 14 x 6
P17 6 x 14 x 7
P17 6 x 14 x 8

DUCT FITTINGS

END CAPS



No. 65 — 30 GA

NO. 65

PART # / SIZE
65-3
65-4
65-5
65-6
65-7
65-8
65-9
65-10
65-12
65-14
65-16
65-18
65-20
65-22
65-24

START COLLARS



No. 70 Starting Collar

NO. 70C*

PART #
70C-3
70C-4
70C-5
70C-6
70C-7
70C-9
70C-9
70C-10
70C-12
70C-14

*CRIMPED
W/ DAMPER

PART # / SIZE
72-6
72-7
72-8
72-10
72-12
72-14

NO. 70

PART #
70-4
70-5
70-7
70-8
70-9
70-10
70-12
70-14
70-16
70-18
70-20
70-22
70-24

REDUCERS



No. 61 Cap Reducer

NO. 61

PART # / SIZE
61-4X3
61-5X3
61-5X4
61-6X3
61-6X4
61-6X5
61-7X4
61-7X5
61-7X6
61-8X4
61-8X5
61-8X6
61-8X7
61-9X5
61-9X6
61-9X7
61-9X8
61-10X4
61-10X5
61-10X6
61-10X7
61-10X8
61-10X9
61-12X6
61-12X8
61-12X9
61-12X10
61-14X8
61-14X12



No. 64 Taper Reducer

NO. 64

PART # / SIZE	PART # / SIZE
64-4X3	64-10X9
64-5X3	64-12X8
64-5X4	64-12X9
64-6X3	64-12X10
64-6X4	64-14X8
64-6X5	64-14X10
64-7X4	64-14X12
64-7X5	64-16X10
64-7X6	64-16X12
64-8X4	64-16X14
64-8X5	64-18X12
64-8X6	64-18X16
64-8X7	64-20X12
64-9X6	64-20X14
64-9X7	64-20X16
64-9X8	64-20X18
64-10X6	64-22X16
64-10X7	64-22X20
64-10X8	64-24X20

DRAW BANDS

No. 81 Draw Bands



PART # / SIZE
EX 81-5
EX 81-6
EX 81-7
EX 81-8
EX 81-9
EX 81-10
EX 81-12

REGISTER BOXES

No. 30 11" Deep Register Box



NO. 30

PART # / SIZE
30-6X10
30-6X12

STACKHEADS

No. 2 Short Throat (6")
Stack dimension 3-1/4" deep

PART # / SIZE
2 10 x 6
2 12 x 6
2 14 x 6



VOLUME DAMPERS

PART # / SIZE
84-4
84-5
84-6
64-7
84-8
84-9
84-10
84-12

No. 84 Damper



DUCT FITTINGS

TEES



No. 121 Tee

PART #	DIAMETER
121-1/2-3	3"
121-1/2-3	4"
121-1/2-5	5"
121-1/2-6	6"
121-1/2-7	7"
121-8	8"
121-9	9"
121-10	10"
121-12	12"
121-14	14"
121-16	16"
121-18	18"
121-20	20"
121-24	24"

REDUCING TEES

PART #	SIZE
121-5X5X3	5X5X3
121-5X5X4	5X5X4
121-6X6X4	6X6X4



No. 162 Tee Wye

NO. 162

PART # / SIZE
162-4X3X3
162-4X4X3
162-5X4X3
162-5X4X4
162-5X5X3
162-5X5X4
162-6X4X3
162-6X4X4
162-6X5X4
162-6X6X4
162-6X6X6
162-7X6X3
162-7X6X4

WYES

No. 163 Wye Branch



NO. 163

PART # / SIZE
163-6X4X4
163-8X6X6
163-10X8X8

SPIN FITTINGS

No. 156D Spin Fitting with or without Damper



NO. 156D W/DAMPER

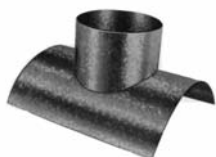
PART # / SIZE
156D-6
156D-8
156D-10
165D-12

NO. 156 W/O DAMPER

PART # / SIZE
156-6
156-8
156-10

SADDLES*

No. 88 90° Saddle Branch



NO. 88

PART # / SIZE
87-3
88-4
88-5
88-6
88-7
88-8
88-9
88-10
88-12
88-14
88-16

No. 86 45° Saddle Branch



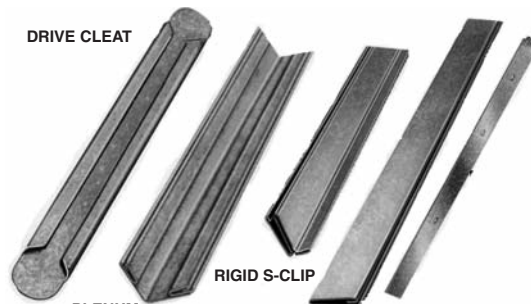
NO. 86

PART # / SIZE
85-3
86-4
86-5
86-6
86-7
86-8
86-9
86-10
86-12

Gasketed A406-
Also available

INSTALLATION ACCESSORIES

DRIVE CLEAT



DRIVE CLEAT

PART #	SIZE
91-8	8"
91-10	10"
DC5	60"
DC10	120"

RIGID S-CLIP

S-CLIP

HANGER STRAP

RIGID S-CLIPS

PART #	SIZE
1SS26	1" LEG

S-CLIP

PART #	SIZE
SC5	60"
SC10X	120"
97-8	8"
97-10	10"
97-12	12"
97-14	14"
97-16	16"
97-18	18"
97-20	20"
97-22	22"
97-24	24"
97-30	30"

PLENUM CORNER

PART #	SIZE
92-5	60"
CS10	120"

HANGER STRAP

PART #	SIZE
HS10	120"

DUCT FITTINGS

OVAL STACKHEADS

No. 95 Standard Oval Stackhead



NO. 95

PART # / SIZE
95-10X4X5
95-10X4X6
95-10X6X5
95-10X6X6
95-10X6X7
95-12X4X6
95-12X6X6
95-12X6X7
95-14X6X7

OVAL PIPE

No. 75 60" lengths
No. 78 100" lengths



NOS. 75/78

PART # / SIZE
75-6
75-7
75-8
78-6
78-7
78-8

OVAL BOOTS

No. 96 Round to Oval 90° Boot



NO. 96

PART # / SIZE
96-6
96-7
96-8

No.102 Round to Oval Straight Boot



No. 102

PART # / SIZE
102-6
102-7
102-8

No 107 Round to Oval End Boot



No. 107

PART # / SIZE
107-6
107-7
107-8

OVAL ELBOWS, FLAT

No. 94 4-Piece Flat Oval Elbow 90°



No. 94

PART # / SIZE
94-6
94-7
94-8

No.98 3-Piece Flat Oval Angle 45°



No. 98

PART # / SIZE
98-6
98-7
98-8

OVAL ELBOWS, VERTICLE

No. 357 Vertical Oval Angle 45°



No. 357

PART # / SIZE
357-6
357-7
357-8

No.350 Vertical Oval Elbow 90°



No. 350

PART # / SIZE
350-6
350-7
350-8

DUCT FITTINGS

Deflect-o® ALUMINUM VENTS AND KITS Bulk supurr-FLEX® Ducting

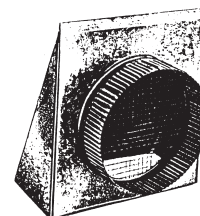


FLEX DUCT

PART #	DIA./LENGTH
F0425	4"/25FT.

FRESH AIR VENT

No. 104
Vent with
Screen
No Damper

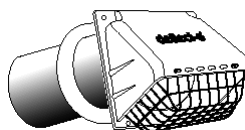


NO. 104

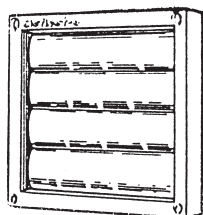
PART # / SIZE
104-4
104-6
104-8

PLASTIC LOUVERED VENT HOODS (NO PIPE)

LOUVERED
SUPURR-VENT® HOODS



RVHA4B(W)

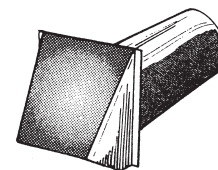


PART #	DIAMETER
HS3W	3" WHITE
HS3B	3" BROWN
HS4W	4" WHITE
HS4B	4" BROWN
HS5W	5" WHITE
HS5B	5" BROWN
HS6W	6" WHITE
HS6B	6" BROWN

ALUMINUM WIDE MOUTH BATHROOM/DRYER VENTS

PART #	DESCRIPTION
DAVHA3	3" WIDE MOUTH
DAVHA4	4" WIDE MOUTH
3000-5	5" WIDE MOUTH
3000-6	6" WIDE MOUTH

* WITH 11" THROAT AND DAMPER



ALUMINUM DRYER BOX

The Dryerbox is a simple innovative space saving metal receptacle that installs in the wall behind the clothes dryer in the laundry room. The 21 inch high molded box will house and collect the flex transition hose allowing the clothes dryer to be installed right against the wall. Eliminating the bends in the flex exhaust hose provides for better, less restrictive airflow, which in turn minimizes lint buildup, saves energy costs and reduces the serious fire hazard from lint buildup.



503-6

New Items are constantly added to our inventory.

FLEXIBLE DUCT



UPC #030 is a UL 181, class I Air Duct, Constructed of Atco's tough, black, polyester core surrounded by high density fiberglass Insulation and metalized, polyester vapor barrier with spiral reinforcement.

RATED POSITIVE PRESSURE: 10" w.g. per UL 181

RECOMMENDED OPERATING PRESSURES: 6" w.g. pos., 4"-12" dia., 4" w.g. pos., 14"-18" dia., 3/4" w.g. neg.

VELOCITY: 5000 FPM, **R Value:** 6.0 (Calculated C Factor= .167)

FLAME SPREAD/SMOKE DEVELOPED: Less than 25/Less than 50

PART #	SIZE	LENGTH	PART #	SIZE	LENGTH
4MFS	4"	25'	10MFS	10"	25'
5MFS	5"		12MFS	12"	
6MFS	6"		14MFS	14"	
7MFS	7"		16MFS	16"	
8MFS	8"		18MFS	18"	
9MFS	9"		20MFS	20"	

***R6 Silver & R8 silver also available**

UPC #020 is a low cost, general purpose, venting duct constructed of non-combustible, corrugated aluminum with water tight seams. Comes in compressed lengths with one crimped end.

RECOMMENDED OPERATING PRESSURE: 6" w.g. pos/neg

VELOCITY: 5000 FPM

PART #	SIZE	LENGTH	PART #	SIZE	LENGTH
3AV	3"	8'	6AV	6"	8'
4AV	4"		7AV	7"	
5AV	5"		8AV	8"	

UPC #050 is a non-insulated, UL 181, Class I Connector, constructed of a triple lamination of metalized polyester, aluminum foil, and polyester film, encapsulating a steel wire helix.

RATED POSITIVE PRESSURE: 10" w.g. per UL 181

RECOMMENDED OPERATING PRESSURE: 6" w.g. pos., all dia., 3/4" w.g. neg. all dia.

VELOCITY: 5000 FPM

FLAME SPREAD/SMOKE DEVELOPED: Less than 25/Less than 50

PART #	SIZE	LENGTH	PART #	SIZE	LENGTH
3NI	3"	25'	8NI	8"	25'
4NI	4"		10NI	10"	
5NI	5"		12NI	12"	
6NI	6"		14NI	14"	
7NI	7"		16NI	16"	

UPC #011 is a vinyl sleeve insulation used to insulate non-insulated duct.

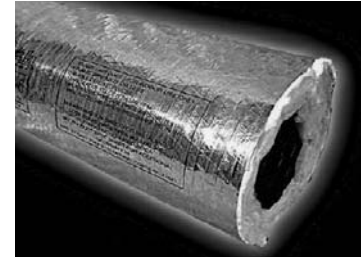
R VALUE: 4.35

FLAME SPREAD/SMOKE DEVELOPED: Less than 25/less than 50

PART #*	SIZE	LENGTH	PART #	SIZE	LENGTH
5VF	5"	5'	10VF (S)	10"	5'
6VF (S)	6"		12VF (S)	12"	
7VF (S)	7"		14VF (S)	14"	
8VF (S)	8"		16VF	16"	
9VF	9"				

***R6 Silver & R8 silver also available**

**"S" Designates also available in silver-poly coating.



CODE COMPLIANCE*

UL 181, NFPA 90A & 90B, SBCC, ICBO, BOCA, HUD 515-2.1(b), Cities of Chicago, New York, San Francisco, County of Dade (Florida).

DUCT FITTINGS



FLEXIBLE DUCT CONNECTOR

2-3/4" METAL 4" FABRIC 2-3/4" METAL/CANVAS



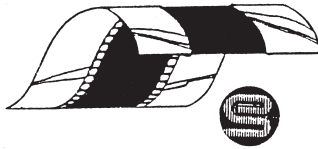
28 GA. GALV
"S-LOC" SEAM

CANFLEX

PART #	LENGTH
EC100	100'

RESIDENTIAL

1-3/4" METAL 3" FABRIC 1-3/4" METAL/NEOPRENE



28 GA. GALV.
"S-LOC" SEAM

NEOFLEX

PART #	LENGTH
RN100	100'

EXTRA WIDE COMMERCIAL

3" METAL 3" FABRIC 3" METAL/VINYL



24 GA. GALV.
"FLEX-LOC" SEAM

VINYLON

PART #	LENGTH
V100	100'



9 GA.
APPROX .135" DIA

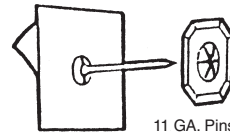
PART #	SIZE	QTY.	PART #	SIZE	QTY.
CMF50	1/2"	1000	CMF 100	1"	1000
CMF50B	1/2"	5000	CMF 100B	1"	5000



MAGNETIC HAMMER DUAL HEAD

FOR SETTING PINCHERS

PART # CPH1



INSULATION HANGERS

"STIK PIN"[®]

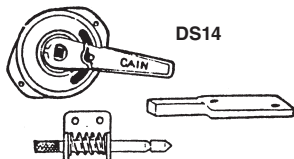
SELF ADHESIVE HANGER
WASHERS SUPPLIED WITH HANGERS

11 GA. Pins

PART #	SIZE	QTY.	PART #	SIZE	QTY.
SPO750	3/4"	100	SPO1250	1-1/4"	100
SPO750B	3/4"	1000	SPO1250B	1-1/4"	1000

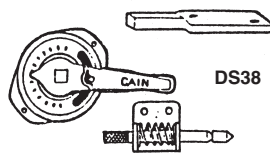
DAMPER BLADE HARDWARE

DAMPER REGULATOR END BEARINGS, DIALS & QUADRANTS DAMPER REGULATOR SETS ZINC PLATED



DS14

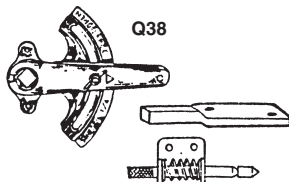
PART #	SIZE
DS14	1/4"



DS38

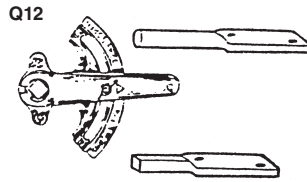
PART #	SIZE
DS38	3/8"

DAMPER QUADRANT SETS ZINC PLATED



Q38

PART #	SIZE
QS38	3/8"



Q12

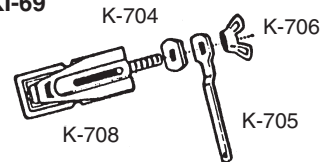
PART #	SIZE
QS12	1/2"

REGULATOR SETS

PART #	SIZE
K69	5/16"
K70	5/16"

CAIN KWIKI REGULATOR SETS HAMMER-ON TYPE

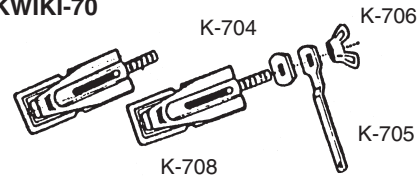
KWIKI-69



K-69

- CONSISTS OF
- 1 K708 BEARING
- 1 K704 WASHER
- 1 K705 HANDLE
- 1 K706 WING NUT

KWIKI-70



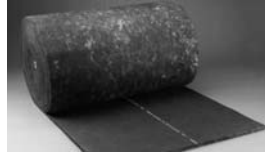
K-70

- CONSISTS OF
- 2 K708 BEARING
- 1 K704 WASHER
- 1 K705 HANDLE
- 1 K706 WING NUT

DUCT ACCESSORIES



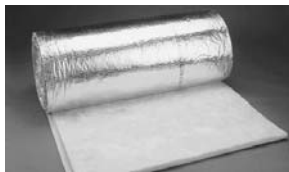
ToughGuard® Duct Liner



ToughGuard R Duct Liner is used primarily as an acoustical liner in HVAC sheet metal ducts to absorb unwanted crosstalk, equipment and air rush noise. This product can be used in most types of heating and cooling duct systems, operating at velocities up to 6,000 fpm and temperatures to 250°F

PART #	SIZE	"K" VALUE	TOLERANCE
1/2 DL	1/2"x47"x100'	.28	±0.3
1DL	1"x47"x100'	.28	±0.3

SoftTouch Duct Wrap Insulation



SoftTouch Duct Wrap Insulation provides thermal efficiency that reduces unwanted heat loss or gain from equipment and ductwork. When properly installed this product virtually eliminates condensation problems on cold duct surfaces.

PART #	SIZE	"R" VALUE	DENSITY (LBS./CU.FT.)
FSK-W	1-1/2"x48"x100'	5.2	.75
FSK-W2	2-1/8"Xx48"x75'	6.9	.75
FSKK-W3	3"x48"x50'	9.6	.75
AF984	3" x 50 Yards	Foil Tape	Skrim Kraft

STAPLE GUN

PART #	DESCRIPTION
P6-6	Staple Gun
STCR2619-3/8	Staples



Shuretape

AF100 U.L.181A-P/B-FX

2 mil aluminum foil with an acrylic adhesive used in the HVAC industry for joining and sealing fiberglass ductboard and Class 1 Flex Duct. Provides an air-tight seal.



Shuretape

DC181B-FX

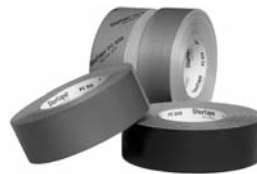
Designed for use on Class 1 Flex Duct for connecting, joining, sealing and patching flexible air ductwork. UL 181B-FX Listed.



Shuretape

AF975

2 mil aluminum foil tape used to seal and join aluminum backed duct wrap, to create water and vapor barriers, and for temporary metal repair.



Shuretape

PC657(12mil)/PC609(10mil)

Industrial grade cloth duct tape used in the HVAC industry for sealing metal and flex duct work, and patching and mending thermal insulation. Tested in accordance with UL 723.



Shuretape

PC622/622B

12.5 mil Premium grade cloth duct tape used for protection of window and door frames and for heavy duty bundling, holding, and splicing. Tested in accordance with UL 723.



DUCT LINER ADHESIVES

A non-cobwebbing, fast tacking spray or brush adhesive designed to attach fibrous glass and duct liner insulation to sheet metal. Flammable wet and self-extinguishing dry.

PART #	DESCRIPTION
1330	17oz. Spray
636SE-1	1 Gallon Bucket
636SE-5	5 Gallon Bucket
658-12	12lb. Cylinder
658-40	40lb. Cylinder
658-H12	12ft. Hose for 658 Cylinder
658-H6	6ft. Hose for 658 Cylinder
658-SG	Spray Gun

DUCT SEALANTS AND MASTICS

Indoor & Outdoor Water Based Sealants

PART #	DESCRIPTION
IG-601-25	Indoor Sealant, 11oz. Cartridge
321-25	Indoor/Outdoor 11oz. Cartridge
321-1	Indoor/Outdoor 1 Gallon Bucket

DUCT SEALANTS Indoor/Outdoor Foil Tape

PART #	DESCRIPTION
AFG1402-3	3" x 100'
AFT701-3	3" x 50'

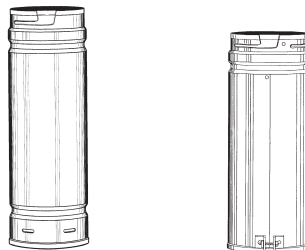


ROUND GAS VENT LENGTHS AND FITTINGS

STRAIGHT LENGTHS

DIA./LENGTH	5'	3'	2'	18"	12"
3"	1	10	385	20	30
4"	2XX	11	386	21	31
5"	3	12	387	22	32
6"	4	13	388	23	33
7"	5	14	389	24	34
8"	6	15X	390	25	35
10"	--	2516	--	2426	--
12"	--	2517	--	2427	--
14"	--	2500	--	2520	--
16"	--	2501	--	2521	--

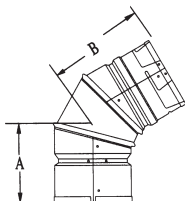
ADJUSTABLE LENGTH



DIA.	PART#
3"	50
4"	51X
5"	52
6"	53
7"	54
8"	55
10"	2456
12"	2457

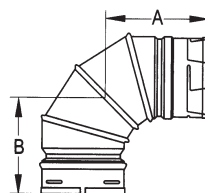
45° ADJUSTABLE ELBOW

SIZE	PART #	A	B
3"	70X	4-1/2"	4"
4"	71	4-1/2"	4-1/2"
5"	72	4-1/2"	4-1/2"
6"	73	5"	5"
7"	74	6-1/2"	6-1/4"
8"	75	6-1/2"	6-1/2"
10"	2476	5-3/4"	5-3/4"
12"	2477	6-1/8"	6-1/4"
14"	2550	6-1/2"	6-7/8"
16"	2551	7-1/4"	7-1/4"



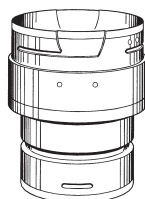
90° ADJUSTABLE ELBOW

SIZE	PART #	A	B
3"	60	5-1/2"	5-1/2"
4"	61	6"	6"
5"	62	6-1/2"	6-1/2"
6"	63X	6-7/8"	6-7/8"
7"	64X	8-1/2"	8-7/8"
8"	65	8-7/8"	8-7/8"
10"	2466	9-5/8"	9-5/8"



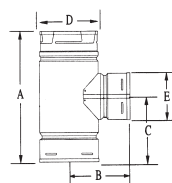
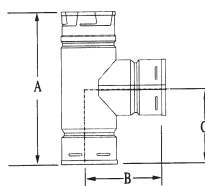
INCREASER

SIZE/IN.	PART #
3" X 4"	100
3" X 5"	101
3" X 6"	102
4" X 5"	103
4" X 6"	104
5" X 6"	105
6" X 7"	106
6" X 8"	107
7" X 8"	108
8" X 10"	2409
10" X 12"	2511



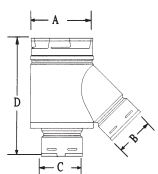
STANDARD TEE

SIZE	PART #	A	B	C
3"	80	9-1/4"	4-1/2"	4-5/8"
4"	81	10-1/4"	4-7/8"	5-1/8"
5"	82	11"	5-5/8"	5-1/2"
6"	83	12-1/4"	5-7/8"	6-1/8"
7"	84	13-1/4"	6-3/4"	6-5/8"
8"	85	14-1/2"	7-3/8"	7-1/4"
10"	2586	17-1/8"	8-1/2"	8-1/2"
12"	2587	19-3/4"	10"	9-3/8"
14"	2540	20-7/8"	11	10-1/2"
16"	2541	25"	12-1/2"	12-1/2"



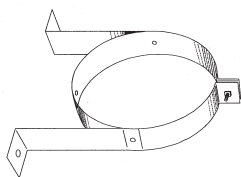
REDUCTION TEE

SIZE/IN.	PART #	A	B	C	D	E
5" x 3" x 4"	82T4	10"	5-3/4"	5"	5-5/8"	4-5/8"
6" x 6" x 4"	83T4	9-7/8"	6-1/2"	5-1/2"	6-5/8"	4-5/8"



WALL STRAP

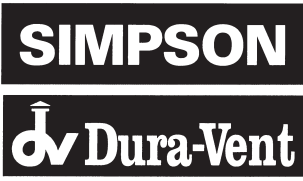
SIZE	PART #
4"	1486
5"	1487
6"	1488
7"	1489
8"	1490



TEE Y WITH 45 BRANCH

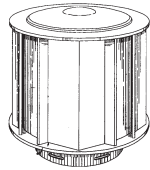
SIZE/IN.	PART #	A	B	C	D
5" x 3" x 4"	430	5-5/8"	3-5/8"	4-5/8"	12-1/4"
6" x 3" x 4"	440	6-5/8"	3-5/8"	4-5/8"	12-1/4"
6" x 3" x 5"	445	6-5/8"	3-5/8"	5-5/8"	13-1/4"
7" x 3" x 5"	450	7-5/8"	3-5/8"	5-5/8"	13-1/4"

ROUND GAS VENT LENGTHS AND FITTINGS



HIGH WIND VENT TOP

SIZE	PART #
3"	130
4"	131
5"	132
6"	133
7"	134
8"	135
10"	2536
12"	2537
14"	2560
16"	2561



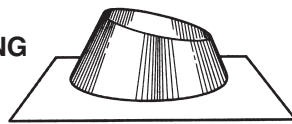
STORM COLLAR

SIZE	PART #
3"	150
4"	151
5"	152
6"	153
7"	154
8"	155
10/12"	2656
14"	2570
16"	2571



ADJUSTABLE ROOF FLASHING

SIZE*	PART #
3"	140
4"	141
5"	142
6"	143
7"	144
8"	145
10"	2646
12"	2647
14"	2580
16"	2581



STEEP FLASHING

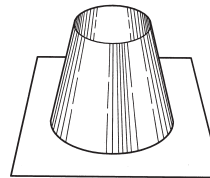
SIZE**	PART #
3"	140S
4"	141S
5"	142S
6"	143S
7"	144S
8"	145S

*Flat to 6/12 roof pitches.

**7/12 to 12/12 roof pitches.

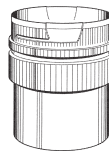
TALL CONE ROOF FLASHING

SIZE	PART #
3"	140F
4"	141F
5"	142F
6"	143F
7"	144F
8"	145F
10"	2646F
12"	2647F
14"	2580F
16"	2581F



DRAFT HOOD CONNECTOR

SIZE	PART #	SIZE	PART #
3"	120	8"	125X
4"	121	10"	2626
5"	122	12"	2627
6"	123	14"	2590
7"	124	16"	2591



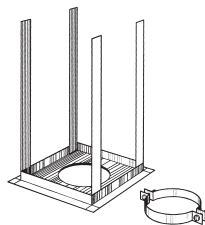
TEE CAP

SIZE	PART #	SIZE	PART #
3"	90	8"	95
4"	91	10"	2596
5"	92	12"	2597
6"	93	14"	2690
7"	94	16"	2691



GAS VENT SUPPORT

SIZE	PART #	SIZE	PART #
3"	1440	7"	1444
4"	1441	8"	1445
5"	1442	10"	1446
6"	1443	12"	1447



PIPE COLLAR

SIZE	PART #
3"	170
4"	171
5"	172
6"	173



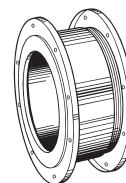
FIRESTOPS

SIZE	PART #	SIZE	PART #
3"	1460	6"	1463
4"	1461	7"	1464
5"	1462	8"	1465



WALL THIMBLE

SIZE	PART #
3"	160
4"	161
5"	162
6"	163
7"	164
8"	165



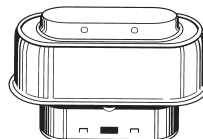
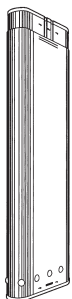


OVAL GAS VENT LENGTHS AND FITTINGS

STRAIGHT LENGTHS

4" OVAL

SIZE	PART #
5'	300
2'	307
18"	303
12"	304

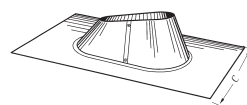
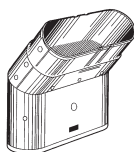


OVAL VENT TOP

SIZE	PART #
4"	316

45° ELBOW

SIZE	PART #
4"	310

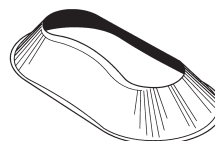
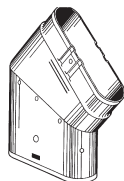


ADJUSTABLE FLASHING

SIZE	PART #
4"	317

45° FLAT ELBOW

SIZE	PART #
4"	311

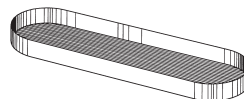
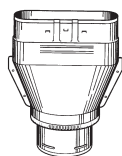


STORM COLLAR

SIZE	PART #
4"	318

ADAPTER ROUND TO OVAL

SIZE	PART #
4"	315

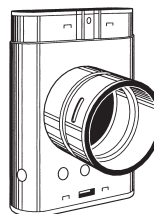


TEE CAP

SIZE	PART #
4"	313

ADAPTER – OVAL TO ROUND

SIZE	PART #
4"	314



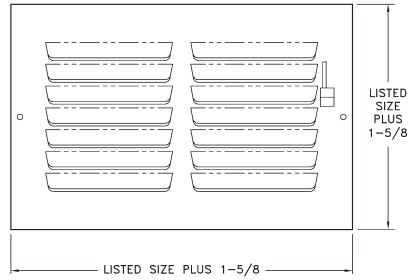
STANDARD OVAL TEE

SIZE	PART #
4"	312

Ceiling/Sidewall Registers

304 Ceiling Register*

- All-steel one-piece stamped-face curved-blade construction
- Four-way deflection
- Four-way air pattern
- For sidewall or ceiling application
- Multi-shutter valve
- Listed heights 10" and larger require double valves
- Bright White enamel finish

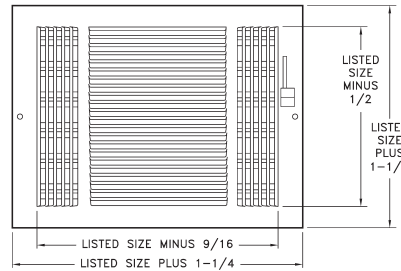


*Some sizes special order

304 Available Sizes (in.)					
HT	WIDTH				
	6	8	10	12	14
6	X				
8		X			
10			X		
12				X	
14					X

631 Register*

- All-steel construction
- Ideal for shallow duct installations
- Used for ceiling or sidewall installations
- For heating or cooling
- Three-way deflection
- 1/3" spaced fins set at 20 degrees
- Multi-shutter valve
- 1-5/8" depth when fully opened
- Interlocking valve louvers for positive shut-off
- Bright White finish

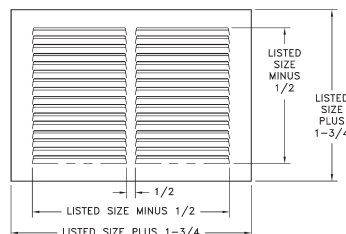


*Some sizes special order

631 Available Sizes (in.)					
HT	WIDTH				
	8	10	12	14	16
4	X	X	X	X	
6	X	X	X	X	X
8		X	X	X	

650 Return Air Grille*

- All-steel construction
- 1/3" spaced fins set at 20 degrees
- Exceptional free area
- 5/16" Margin Turnback
- Bright White finish



*Some sizes special order

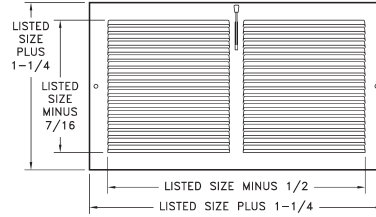
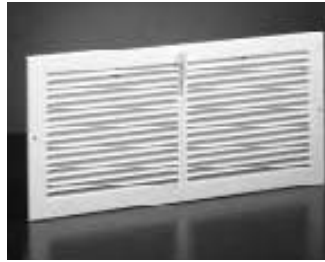
650 Available Sizes (in.)											
HT	WIDTH										
	6	8	10	12	14	16	18	20	24	30	36
4	X	X	X	X	X	X	X	X	X	X	X
6	X	X	X	X	X	X	X	X	X	X	X
8		X	X	X	X	X	X	X	X	X	X
10	X		X	X	X	X	X	X	X	X	X
12			X	X	X	X	X	X	X	X	X
14	X	X	X	X	X	X	X	X	X	X	
16				X	X	X	X	X	X	X	
18				X	X		X	X	X	X	
20			X	X	X	X		X	X	X	
24	X		X	X	X	X	X	X	X	X	
25								X			
30					X			X	X	X	

Sidewall Registers & Grilles

651 Register*

- All-steel construction
- 1/3" spaced fins set at 20 degrees
- Positive volume-control damper
- Bright White finish

*Some sizes special order

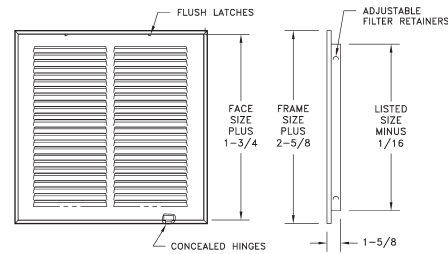


651 Available Sizes (in.)				
HT	WIDTH			
	8	10	12	14
4	X	X	X	
6	X	X	X	X

659 Return Air Filter Grille

- All-steel construction
- 1/3" spaced fins set at 20 degrees
- Effectively conceals filter
- Use standard 1" thick disposable filters (not included)
- Removable face for easy installation and cleaning
- Equipped with adjustable filter retainers
- Bright White finish

*Some sizes special order

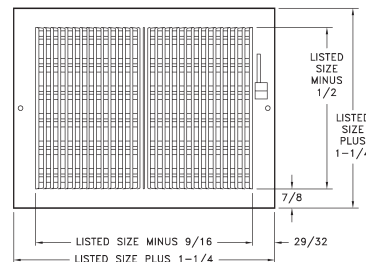


659 Standard Sizes (in.)										
HT	WIDTH									
	10	12	14	16	18	20	24	25	30	36
6		X	X				X		X	
8							X		X	
10	X					X	X		X	
12		X			X	X	X		X	
14			X			X	X	X	X	X
16				X		X	X	X	X	X
18					X		X		X	
20	X	X	X	X		X	X	X	X	
24		X	X		X	X	X		X	
25			X	X		X		X		
30			X	X		X	X		X	
36							X			

661 Register*

- All-steel construction
- Used for ceiling or sidewall installations
- For heating or cooling
- Ideal for shallow duct installations
- Two-way deflection
- 1/3" spaced fins set at 20 degrees
- Galvanized multi-shutter valve
- Bright White finish

*Some sizes special order



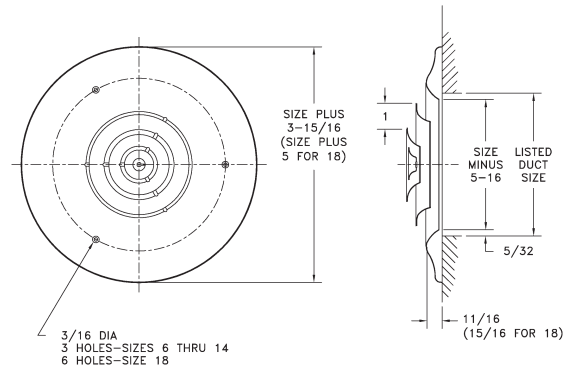
661 Standard Sizes (in.)										
HT	WIDTH									
	6	8	10	12	14	16	18	20	24	30
4	X	X	X	X	X	X			X	
5		X	X	X	X					
6	X	X	X	X	X	X	X	X	X	
8		X	X	X	X	X	X	X	X	X
10			X	X						X
12				X						

Ceiling Diffusers

16 Ceiling Diffuser

- All-steel construction
- Step-down diffuser rings deflect air stream 360 degrees
- Bright White finish

Only available in sizes shown

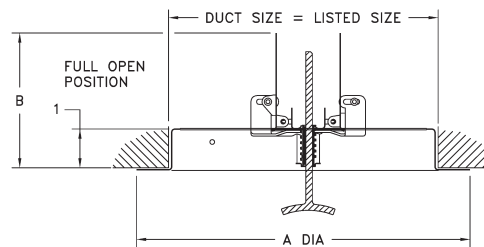


16 Available Sizes				
6"	8"	10"	12"	14"

12 Butterfly Damper

- All-steel construction
- Controls air volume evenly over entire #16 diffuser
- Removable knob operator for adjustment from closed to fully open
- Golden Sand enamel finish

Note: Knob permits diffuser to be held in position while attaching face screws



Only available in sizes shown

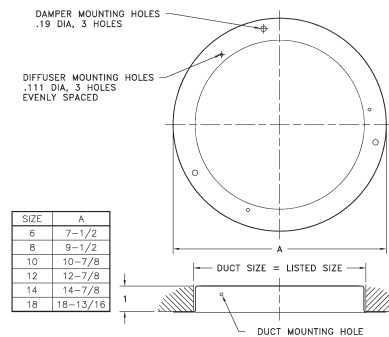
12 Available Sizes (in.)		
Size	A	B
6	7-1/2	3-11/16
8	9-1/2	4-11/16
10	10-7/8	5-11/16
12	12-7/8	6-11/16
14	14-7/8	7-11/16

11 Duct Ring

- All-steel construction
- For installation of #16 diffuser when not using a damper
- Golden Sand enamel finish



11 Available Sizes				
6"	8"	10"	12"	14"



Floor Registers & Grilles

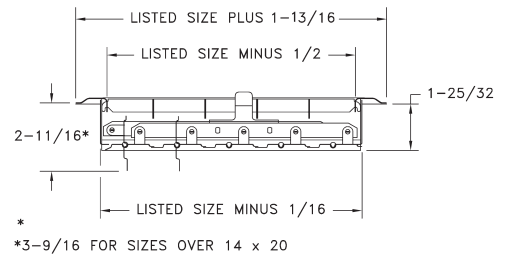
210 Floor Register*

- All-steel construction
 - Provides firm, smooth surface
 - Extremely rigid
 - Free area averages over 75%
 - Toe-operated valve control
 - Golden Sand enamel finish
- *Some sizes special order



HT	210 Standard Sizes (in.)					
	WIDTH					
	6	8	10	12	14	16
4		X	X	X	X	
6	X	X	X	X	X	X
8		X	X	X	X	
9				X		
10			X	X	X	
12				X	X	

End View Showing Depth with Valve Open:

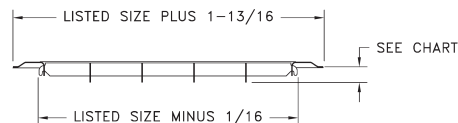


265 Floor Return* Air Grille

- All-steel construction
 - Provides firm, smooth surface
 - Extremely rigid
 - Free area averages over 75%
 - Golden Sand enamel finish
- *Some sizes special order



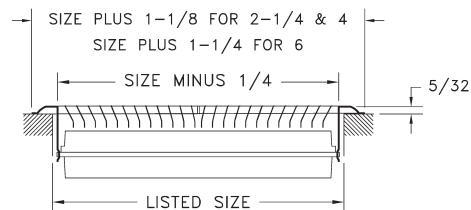
HT	265 Standard Sizes (in.)										
	WIDTH										
	8	10	12	14	16	18	20	24	25	30	36
4	X	X	X	X	X	X	X	X		X	
6	X	X	X	X	X	X	X	X	X	X	X
8	X	X	X	X	X	X	X	X	X	X	
9			X								
10		X	X	X	X	X	X	X		X	
12			X	X	X	X	X	X		X	
14				X	X		X	X		X	
16					X		X	X		X	
18						X		X		X	
20							X	X	X	X	
24								X		X	X



HEIGHT	WIDTH	MAXIMUM DEPTH
4 THRU 14	6 THRU 30	21/32
14 THRU 14	32 THRU 36	25/32
16 THRU 18	16 THRU 36	
20 THRU 24	20 THRU 36	1-13/32

411 Deluxe Floor* Diffuser

- All-steel construction
 - Heavy-gauge individually welded diffusion vanes
 - Multi-angle fin setting
 - Foot-operated dial control
 - Can be used in high traffic areas
 - Golden Sand or Bright White enamel finish
- *Some sizes special order

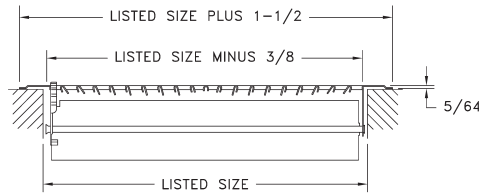
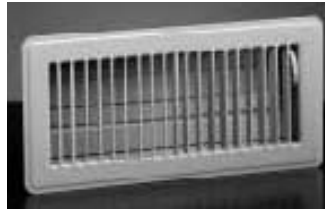


411 Available Sizes (in.)	
Size	Free Area Sq. Inches
2 x 10	15
2 x 12	19
2 x 14	22
4 x 10	29
4 x 12	35
4 x 14	40
6 x 10	44
6 x 12	53
6 x 14	60

Floor Registers & Grilles

421 Floor Diffuser

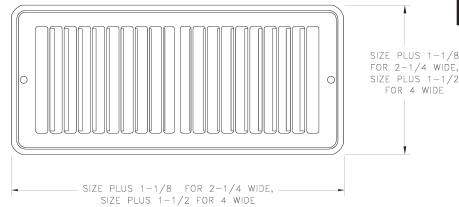
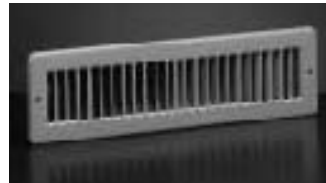
- All-steel construction
- Multi-angle fin setting
- Rolled fin for strength and safety
- Welded construction
- Foot-operated dial control
- Heavy-gauge stamped face
- Golden Sand or Bright White enamel finish



421 Available Sizes (in.)	
Size	Free Area Sq. Inches
2 x 10	15
2 x 12	17
2 x 14	20
4 x 8	22
4 x 10	27
4 x 12	32
4 x 14	37
6 x 10	39
6 x 12	48
6 x 14	56

420 Toe-Space Grille

- All-steel construction
- Heavy-gauge stamped face
- Multi-angle fins
- Golden Sand or Bright White enamel finish

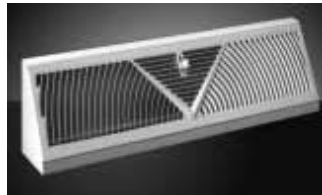


420 Available Sizes (in.)	
Size	Free Area Sq. Inches
10 x 2	15
12 x 2	17
14 x 2	20
10 x 4	27
12 x 4	32
14 x 4	37

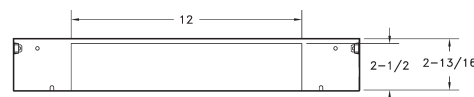
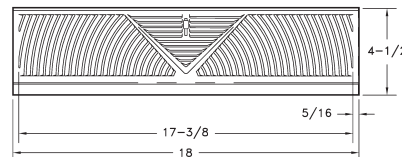
Baseboard Registers & Grilles

406 Baseboard Diffuser

- All-steel construction
- 406 blankets wall or window area
- Golden Sand or Bright White enamel finish

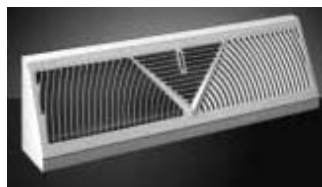


Catalog Number	Size	Free Area Sq. Inches	Overall Length	Height	Base Projection
406	15"	32	15	4-1/2	2-3/4
406	18"	38	18	4-1/2	2-13/16
407	18"	38	18	4-1/2	2-13/16



407 Matching Return Air Grille

- All-steel construction
- Complementary return air grille for Model 406 supply
- Golden Sand or Bright White enamel finish



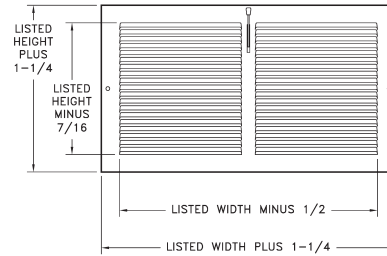
BOTTOM VIEW

406 18" Shown

Baseboard Registers

654 Baseboard Register with Damper

- One-piece steel construction
- 1/3" spaced fins set at 20 degrees
- 7/8" margin turnback
- Exceptional free area
- Positive volume-control damper
- Bright White enamel finish

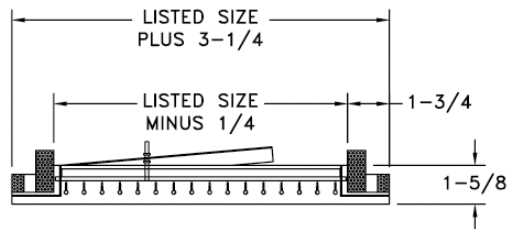
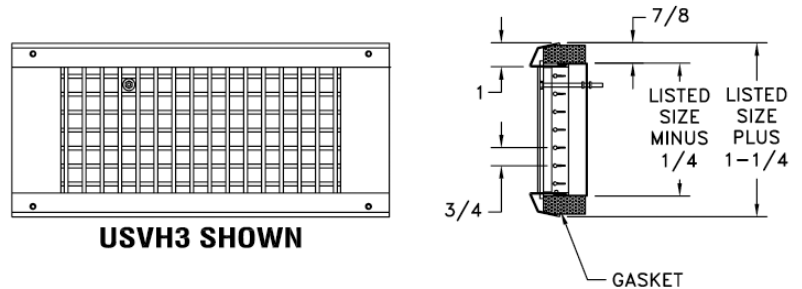


654 Available Sizes (in.)			
HT	WIDTH		
	10	12	14
6	X	X	X

Spiral Registers

USVH Double Deflection Spiral Registers with Damper

- Extruded aluminum construction
- Two rows of individually adjustable blades for horizontal and vertical deflection control
- Optional face adjustable scoop to direct airflow
- Counter-sunk screw holes
- Available sizes: 10x3 to 36x12
- Fits duct sizes 6" on up, based on diffuser height
- Satin Anodized finish



For Models USV and USVH
Minimum Duct Diameter
Width

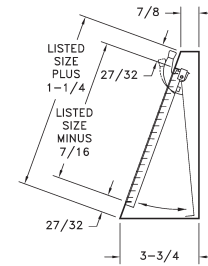
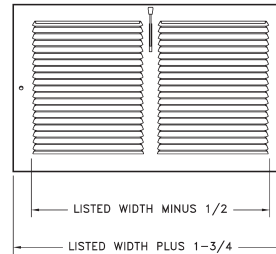
	10	12	14	16	18	20	24	30	36
3	6	6	6	6	6	6	6	6	6
4	10	10	10	10	10	10	10	10	10
6	12	12	12	12	12	12	12	12	12
8			20	20	20	20	20	20	20
10				24	24	24	24	24	24
12					30	30	30	30	30

Baseboard Registers & Grilles

655 Baseboard Register* with Damper

- All-steel construction
- 1/3" spaced fins set at 20 degrees
- Positive volume-control damper
- Bright White enamel finish

*Some sizes special order

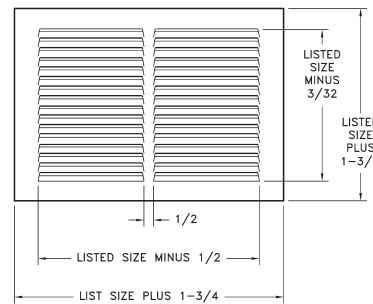


655 Available Sizes (in.)				
HT	WIDTH			
	8	10	12	14
6	X	X	X	X

657 Baseboard* Return Air Grille

- One-piece steel construction
- 1/3" spaced fins set at 20 degrees
- 7/8" margin turnback
- Exceptional free area
- Install with fins upward or downward for best duct concealment
- Complementary return air grille for Model 654 or 664 supply
- Golden Sand or Bright White enamel finish

*Some sizes special order

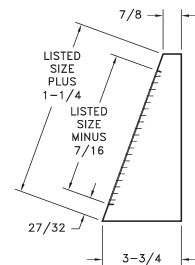
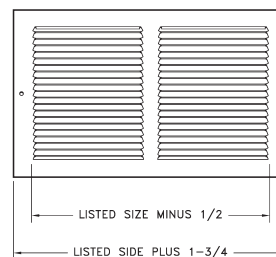


657 Standard Sizes (in.)								
HT	WIDTH							
	10	12	14	16	20	24	30	36
4			X					
6	X	X	X	X	X	X	X	X
8	X	X	X	X	X	X	X	X
10			X		X	X	X	
12			X			X	X	

658 Baseboard* Return Air Grille

- All-steel construction
- 1/3" spaced fins set at 20 degrees
- Complementary return air grille for Model 655 supply
- Bright White enamel finish

*Some sizes special order

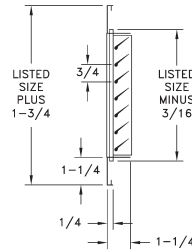


658 Available Sizes (in.)					
HT	WIDTH				
	10	12	14	24	30
6	X	X	X	X	X
8			X	X	X

T-Bar Return Air Filter Grilles

RH45T Aluminum Bar-Style Return Grille

- Aluminum construction
- Horizontal Bars at 45 degrees
- Mount flush with T-Bar ceilings
- Bright White or Satin Anodized finish

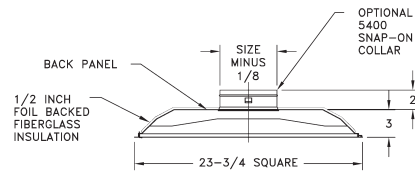
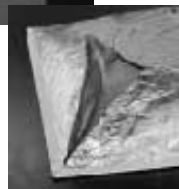
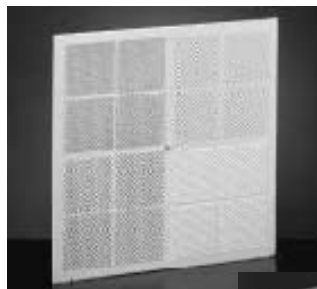


RH45T Available Sizes	
22" x 22"	(overall 23-3/4" x 23-3/4") for 24" x 24" openings
46" x 22"	(overall 47-3/4" x 23-3/4") for 48" x 24" openings

T-Bar Return Air Grilles

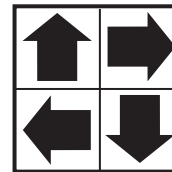
444 SurfAire® Aluminum Face Renovator Series Diffuser

- Aluminum construction
- Unique deflector apertures
- Accepts snap-in collar (5400 Series) (6"-12")
- 444 - 14" collar is factory installed
- Utilizes butterfly damper (3800 Series) inserted in collar
- Damper adjusted thru diffuser face to allow proper air balancing
- Bright White finish



444 Available Sizes	
Overall Size 23-3/4" x 23-3/4"	

444

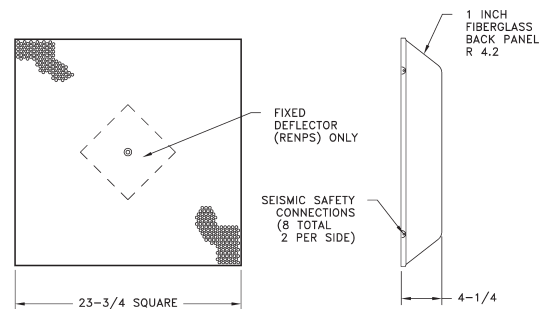
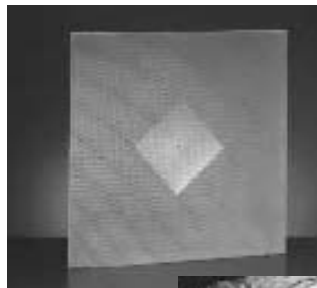


4-Way Throw

T-Bar Surfaire/Renovator Diffuser

RENPS Steel/Aluminum Perforated Supply Diffuser with Insulated Back

- Perforated steel face with deflector
- Molded fiberglass back
- Accepts 6" to 14" unique tab collar (6400 series) or 6" to 12" unique snap-in collar (5400 series); also accepts standard spin-in collar
- Bright White finish



RENPS Available Sizes	
20" x 20", overall 23-3/4" x 23-3/4"	

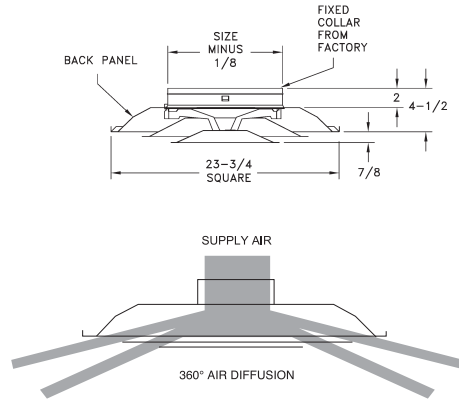
T-Bar Diffuser

FPD Steel/Aluminum Fixed Pattern Diffuser

- Steel construction
- Provides high air volume delivery
- 360-degree air diffusion
- Two-cone fixed core
- Fixed collar 6"–14"
- Unique 2" high collar permits easy flex connections
- Utilizes butterfly damper (3800 Series) inserted in collar – order separately
- Damper adjustable thru face
- Formed back panel
- Bright White finish



FPD T-Bar Available Sizes
Overall Size 23-3/4" x 23-3/4"

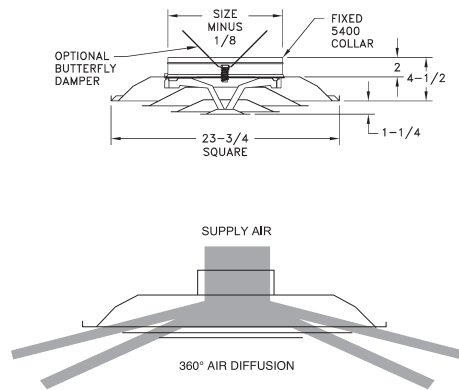


FPD3 Steel Fixed Pattern Diffuser

- Steel construction
- Provides high air volume delivery
- 360-degree air diffusion
- Three cone fixed core
- Fixed collar 6"–14"
- Unique 2" high collar permits easy flex connections
- Utilizes butterfly damper (3800 Series) inserted in collar—order separately
- Damper adjustable thru face
- Formed steel back panel
- Bright White finish



FPD3 T-Bar Available Sizes
Overall Size 23-3/4" x 23-3/4"



5400 Series Collar Ring

- Unique snap-in design for easy installation
- 2" high collar permits easy flex connections
- Bead on collar improves the strength and provides retention for flexible duct connections



*14" collar is mounted to diffuser at factory for steel back panels only

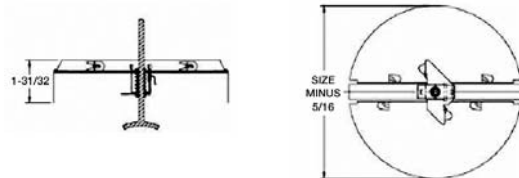
16" and 18" available for PDR only

NOTE: Uses 5400PP with insulated back panels for collar sizes 6"-12" only

5400 Series Available Sizes (in.)									
6"	7"	8"	9"	10"	12"	14"*	16"	18"	

3800 Series Dampers

- Adjustable butterfly damper with removable handle (included)
- For use with 5400 Series collar
- Golden Sand finish



3800 Series Available Sizes (in.)									
6"	7"	8"	9"	10"	12"	14"*	16"	18"	



CHIMNEY LINERS

Deflecto offers a number of “simple solutions” for todays complicated venting issues. The National Fuel Gas Code NFPA 54 and ANSI Z223. 1 give you specific rules to follow. We give you specific products that make those rules easy to follow.

When you install a category I gas fired heating appliance into a masonry chimney you must follow these rules:

- 1) The Chimney must be lined and sized properly. Most masonry chimneys are over sized and absorb too much heat to be considered a proper vent. If you have any doubts line the chimney with the right size liner. If it's unlined you must line it.
- 2) If the equipment is fan assisted, its imperative that you properly size and line the chimney in all cases.

Follow these two simple rules and your venting problems are over No more costly call backs or equipment failure. The additional cost to line the chimney will be realized immediately.

Aluminum Liner Kit

Kit Includes:
 Aluminum Liner
 Chimney Flashing
 Rain Cap
 Mortar Collar
 Pull Fitting

Part #LK __Dia. __Lgth.
 Available diameter 4"-8"
 Available lengths 25'-35'
 Custom sizes available

PART#	Dia./Length
LK425	4"/25'
LK435	4"/35'
LK525	5"/25'
LK535	5"/35'
LK5525	5.5"/25'
LK5535	5.5"/35'
LK625	6"/25'
LK635	6"/35'
LK725	7"/25'
LK735	7"/35'
LK835	8"/35'



MODEL LK



Additional Aluminum Liner Lengths extensions

PART#	Dia./Length
LF525	5"/25'
LF625	6"/25'
LF635	6"/35'
LF725	7"/25'
LF825	8"/25'



In Line Galvanized Drain Tee

Part #02GADRTE - __Dia.

Available in:
 5x5x4 7x7x4
 6x6x4 8x8x4



Liner Coupling

To attach two lengths of pipe.

Part #02CNTRG- __Dia.
 Available in 3" - 10" diameters.
 Custom sizes available.

