
MANUFACTURERS INDEX, SECTION 6

POWERFLAME 6-1



FORCED DRAFT BURNERS

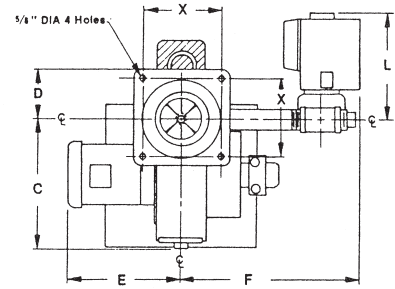
MODEL CG

The Power Flame Model CG gas burner presents optimum state-of-the-art design for maximum combustion efficiency and operating dependability.

STANDARD EQUIPMENT

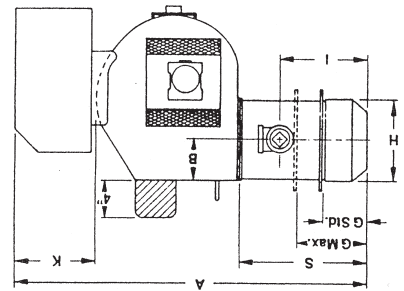
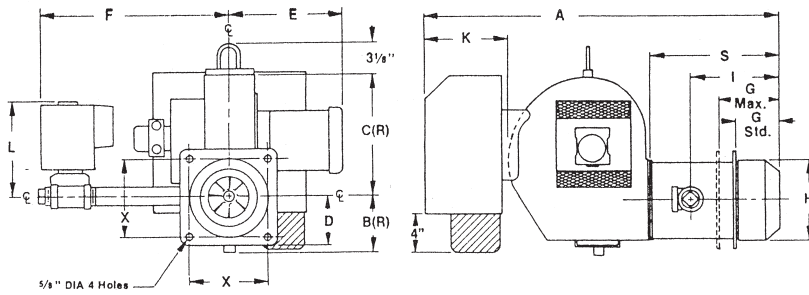
- 3450 RPM motor, squirrel cage blower, panel with two lights (power, main fuel) & control switch.
- Gas electric pilot and gas ignition transformer
- Leakage test cock, pilot, and main gas cock
- Pilot and main pressure regulators
- Air safety switch

MODEL C CONFIGURATION



NOTE: Add 3/4" to "H" for size of opening in boiler front plate.

MODEL CR CONFIGURATION



DIMENSIONS

MODEL #	A	B	B(R)	C	C(R)	D	E	F	G STD.	G MAX.	H	I	K	L	S	X
PF CR1-G-10	34-1/8	3-1/4	5-1/2	14-1/2	14-1/2	4-5/8	12-1/4	20	3-1/4	4-3/4	7-1/4	7-3/8	10-1/4	11-1/8	12-5/8	7-1/4
PF CR1-G-12	34-1/8	3-1/4	5-1/2	14-1/2	14-1/2	4-5/8	12-1/4	20	3-1/4	4-3/4	7-1/4	7-3/8	10-1/4	11-1/8	12-5/8	7-1/4
PF CR2-G-15	39-1/8	4-1/2	6-1/8	14-7/8	14	5-1/4	14	20	4	6-3/4	8-3/4	8-1/2	10-1/4	11-1/4	13-3/8	8-1/2
PF CR2-G-20A	39-1/8	4-1/2	6-1/8	14-7/8	14	5-1/4	14	20	4	6-3/4	8-3/4	8-1/2	10-1/4	11-1/4	13-3/8	8-1/2
PF CR2-G-20B	39-1/8	4-1/2	6-1/8	14-7/8	14	5-1/4	14	20	4	6-3/4	8-3/4	8-1/2	10-1/4	11-1/4	13-3/8	8-1/2
PF CR3-G-20	44	5-1/4	7	16-5/8	15-1/4	6	16	22-3/8	4-1/2	8	10-1/8	10	10-1/4	11-3/4	15-1/2	10
PF CR3-G-25	44	5-1/4	7	16-5/8	15-1/4	6	16	22-3/8	4-1/2	8	10-1/8	10	10-1/4	11-3/4	15-1/2	10
PF CR3-G-25B	44	5-1/4	7	16-5/8	15-1/4	6	16	22-3/8	4-1/2	8	10-1/8	10	10-1/4	11-3/4	15-1/2	10
PF CR4-G-25	50	6-1/4	7-1/4	18-7/8	17-3/4	7	18-1/2	28	6	9	12-1/8	12	10-1/4	11-3/4	19-1/8	12
PF CR4-G-30	50	6-1/4	7-1/4	18-7/8	17-3/4	7	18-1/2	28	6	9	12-1/8	12	10-1/4	11-3/4	19-1/8	12
PF CR5-G-30	50	6-1/4	7-1/4	18-7/8	17-3/4	7	18-1/2	26-1/2	6	9	12-1/8	12	0-1/4	11-3/4	19-1/8	12
PF CR6-G-30	49-7/8	6-1/4	7-1/4	18-7/8	17-3/4	7-3/4	19-7/8	26-1/2	5	11-3/4	13-5/8	13-1/2	0-1/4	11-3/4	19	13-1/2

RATINGS, SPECIFICATIONS

PART #	CAPACITY		BLOWER HP (3450 RPM)	STANDARD GAS TRAIN	GAS PRESSURE REQUIRED (IN W.C.)
	MBH MAX.	BOILER			
PF CR1-G-10-00	980	23.5	1/3	1"	5.5
PF CR1-G-10-LHO	980	23.5	1/3	1"	5.5
PF CR1-G-12-LHO	1,360	32.3	1/3	1-1/4"	4.5
PF CR2-G-15-LHO	2,200	52.3	1/2	1-1/2"	6.8
PF CR2-G-20A-LHO	2,500	60.0	3/4	2"	4.5
PF CR2-G-20B-LHO	3,080	73.5	1	2"	5.0
PF CR3-G-20-LHL	3,650	87.0	1-1/2	2"	6.0
PF CR3-G-25-LHL	4,718	112.0	1-1/2	2-1/2"	6.4
PF CR3-G-25B-LHL	5,250	125.0	3	2-1/2"	8.3
PF CR4-G-25LHL-3	5,250	125.0	3	2-1/2"	8.3
PF CR4-G-25	6,300	150.0	3	2-1/2"	11.0
PF CR4-G-30	7,840	190.0	5	3"	14.0
PF CR5-G-30(B)	10,500	250.0	7-1/2	3"	19.5, 16.0
PF CR6-G-30	14,215	340.0	10	3"	16.0